

# EDINA MODEL YACHT CLUB

## SAIL & SCALE NEWSLETTER

MAY 2004

VOLUME 13, NUMBER 5

## 2004 OPEN BOATING SEASON

**Sunday April 4th was the first Sunday of the EMYC open boating season.**



**By Dale Johnson**

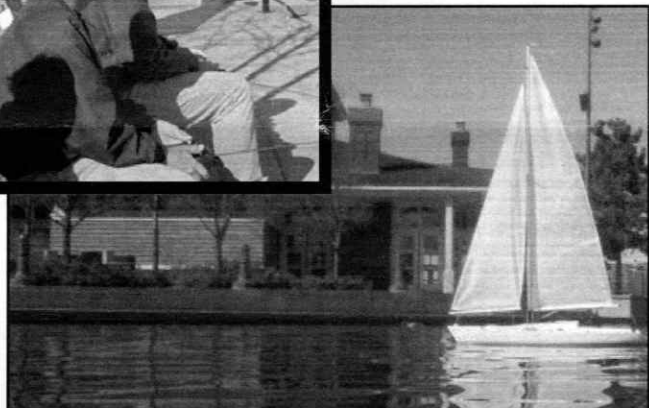
**S**unday afternoon at least 12 club members kicked off the 2004 season. The temperature was 60° or so and the wind was a little flaky on the center pond but we got the boats out for the first time this year and it felt great!

Monday April 5, 2004 they started draining the ponds and it seemed to take the whole week to lower the water level to twenty eight inches below normal. With the pond water level down they found a sunken island on the northwest corner of the north

pond, cause by the road sand that is washed in with the water. The pond is filled by road run-off from the surrounding streets as far away as the south side of

Southdale. Paul Olsen and Larry Wheeler got their shovels out and lowered the island to water level which should give boats a twenty eight inch clearance. Tom Shirley reported finding many cel phones and pagers (no boats). McDonalds happy meal

**Boating Continues on 11**



### SCHEDULE OF EVENTS:

– Open Boating every Tuesday and Thursday 5:30 - 9:00 p.m. and every Sunday 4:30 - 9:00 p.m. –  
May 18, Tues .....7:00-9:00 p.m. ....Membership Meeting

## COMMODORE'S CORNER



**T**he 2004 boating season is here. The pond was drained, cleaned and refilled by April 19. Sailors on the north pond have been very

active already.

The 24th of April brought the annual sailboat tune-up, with 15 boats and 24 members in attendance. Dave Brosnan and Tony Johnson hosted the event and everyone pitched in to help tune and solve rigging problems. Following the tech session there was a good turnout for sailing on the north pond. There is one more meeting before the Parade of Boats, so get your equipment ready, with an emphasis on boats for the on-the-water show. We want to have plenty of boats on the pond at all times.

—Paul Olsen

## — NOTICE — No REDWING SHOW

This year it looks like there will be no classic boat show in Redwing. The show might possibly be held at lake Minnetonka.

— We'll keep you posted —

## EMYC New Members

Don Mertz  
Don Sektnan

— Welcome to the Club —



## PARADE OF BOATS 2004

**O**ur popular Parade of Model Boats show will be held on Sunday, June 13th from 11:00AM to 4:00PM.

Club members will be allowed to participate with the setup beginning at 9:00AM. This allows for a comfortable two hour window of preparation so that things look complete by the start of the show at 11:00AM.

The details of the show are included in this newsletter and many of your questions should be answered with the items presented from the two pages of printed information.

Our May meeting will include a complete review of the show and allow for your input and suggestions to help make the show a success.

Please remember that this show is for the entire EMYC membership and your ideas and contributions are what make it consistently a well-liked event. Any specific questions or comments can be made to John Bishop at [REDACTED]

We hope you can join us for another great year.

—John Bishop

# USS MISSOURI AND USS ARIZONA

By Doug Person

**D**uring my trip to visit my brother, Don, and my sister-in-law, Biz, in Honolulu from February 17-24, 2004, I had many remarkable experiences: Don is a Coronal in the US medical Corp, located at Tripler Army Medical Center. He is a senior physician full of many fascinating recollections

of his some forty years of reserve, active duty, and regular army experiences. His hospital still bares pockmarks from the Japanese attack on Pearl Harbor, December 7, 1941!

I had not had an opportunity to really "connect" with him for the past twelve years. My last visit to see him was in 1992 in Honolulu.

Among the many wonderful sites on Oahu I was really impressed to visit the USS Arizona Memorial again, but I also had an opportunity to visit the restored USS Missouri.

The USS Missouri was one of the seven battle ships tied up along "Battleship Row" on the southeast shore of Ford Island, when the first wave of the Japanese attack began, early on the morning of December 7, 1941.

The attack claimed the lives of 2,388 military and civilian personnel and resulted in the damage or loss of 21 vessels and 170 aircraft. It was this event that launched the U.S. involvement in WWII. The attack was intended to immobilize the Pacific fleet.

The battleship's keel was laid in 1941 and was completed and launched in 1944. The ship provided gunfire support for many of the famous and important battles of WWII.

On September 2, 1945 the USS Missouri was chosen to be the stage for the signing of "Japan's Formal Instrument of Surrender".

The battleship is about 900 feet long, has a beam of about 110 feet wide, is 210 feet high and had a speed of over 32 knots. It was built in the New York Naval Shipyard, Brooklyn, New York. It is of the Iowa-Class Battleship.



Doug Person on teak foredeck of USS Missouri February 20, 2004.

The "Mighty Mo" was decommissioned in February of 1955 and recommissioned in May of 1986. Its main gun battery had nine 16"/50 cal. weapons, with a range of 9 miles. Its secondary gun battery had twelve 5"/38 cal. guns with a range of 23 mile range.

In 1991, the Missouri was deployed to the Persian Gulf War.

It was outfitted with 32 tomahawk anti-surface missiles. She was decommissioned in 1992 and in 1995 the Missouri was stricken from the Naval Shipyard Register.

The United States donated the "Mighty Mo" for preservation as a national museum. Hawaii was selected and charged with the sole responsibility of preserving this great piece of United States history. The ship now resides next to the Arizona Memorial off Ford Island, which is located in the heart of Pearl Harbor.

While touring the ship I had the chance to stand at the exact place where Japan formally signed the official document of surrender...bringing an end the world's bloodiest war.

During our tour of the ship I had an opportunity to visit the main and secondary battery. Below decks they have an amazing 8' to 10' model of the ship...virtually identical to the model George Pfeifer built about three years ago...and now resides in the model room of club member Terry Spletstoeser.

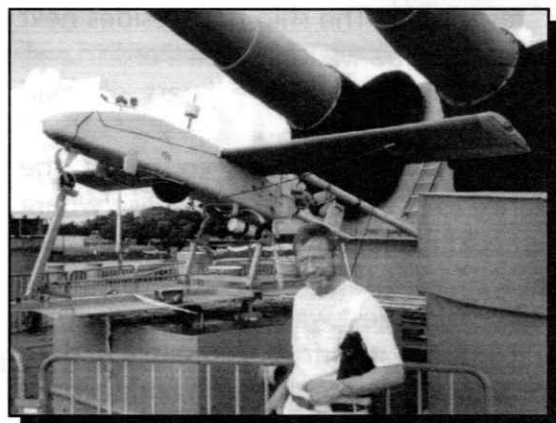
Hickam Airforce Base, located adja-



cent to the Honolulu International Airport, had some amazing jets taking off in sequence with an incredible rumble followed by a jet that roared to the end of the runway and punched it into a totally vertical flight pattern, out of sight in moments. Clearly, the Airforce jets have what we call in sailboat racing, "Right of Way"!

My brother and I went to the north shore of Oahu, to the bonsai pipeline to watch professional surfers catching 24' to 28' waves...truly awesome! From October to about April is winter in Hawaii, so the surf is really up during this time of year.

We also had an opportunity to visit "Punchbowl", the national military cemetery of the pacific. On our walk to the rim of the cemetery, we saw several gravesites dedicated to heroes lost in Pacific conflicts. Among them was the site of Ernest Pyle, sailor and combat photographer of WWII as well as plaques dedicated to the sailors, who lost their lives during the attack on Pearl Harbor, others commemorating Army personnel, Green Baretts and Special Forces, Vietnam Veterans and so on.



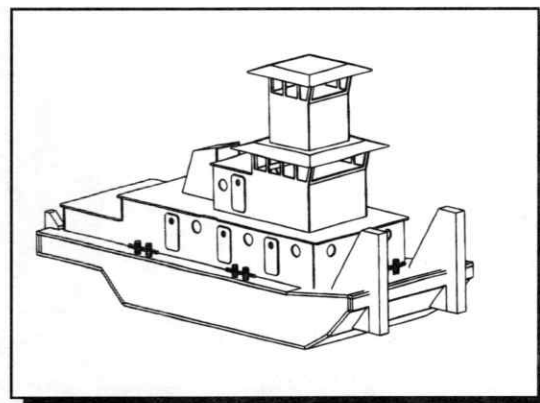
**Foredeck of USS Missouri with drone for use in Persian Gulf War of 1991**

I am deeply grateful to my brother and his wife who were gracious hosts during this incredible vacation!

—Doug Person

## THREE STAR POLO TUG

A number of years ago Jim Smith, a long time member of the club, obtained a set of plans "The Battling Polo Tug." He built his first one of these boats from those plans, and was able to determine that the boat required a few changes. His suggestions included increasing the width of the hull for added stability, and to increase the draft of the hull. Back in 2001 I was able to obtain a copy of these plans, along with the article that Smith had written to explain the changes that he suggested.



The original plans were not very good, and trying to incorporate Jim's suggestions on the fly was a little more work than I really wanted to do. So I sat down at my trusty computer, and dusted off an old copy of Auto CAD, and generated a new set of plans that incorporated Jim's suggested changes. While working on the new design, I found myself forced into early retirement, and I was no longer able to gain access to an appropriate plotter, to plot out the new drawings. Eventually I was able to redraw all of the parts, so that I could print them out on my printer at home. I then had twenty five copies of the new drawings made, for any other members who were interested in building one of these boats for themselves.

This past winter, I was finally able to find the time to start building my own pair of these boats, and so far I have found errors on two of the drawings. Drawing PT3-006-04 was missing a dimension, and I needed to redraw drawing PT3-006-02 for clarity. Just recently, I learned that someone has taken the last copy of these plans, and now I am preparing to release a new set of plans. I do not know if there will be any more copies printed out, but I would like to have a complete and accurate set of plans available just in case. I would like to ask that any of the members of the club have built, or are building one of these boats, to contact me at [REDACTED] with any other errors that they have found, or with any suggestions for changes that you feel should be included in the new set of plans.

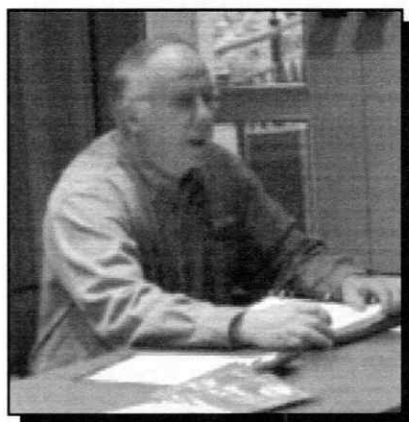
—Mike Ross



# AT THE MEMBERSHIP MEETING

**APRIL 20, 2004**

Commodore, Paul Olsen called the meeting to order at 7:10 PM.



**Paul Olsen.**

Commodore asked new members and guests to introduce themselves.

Paul mentioned that he had been approached by Edina's Adaptive Department to set a date for an evening of boating with our handicapped

neighbors. Thursday, July 15th from 6:30 - 7:30 was scheduled. Members with sailboats and / or slow electrics were encouraged to sign up. (I didn't find mention of the event in the '02 or '03 newsletters, but we had 18 club members participate in 2000 and 20 did so in 2001. Jim).

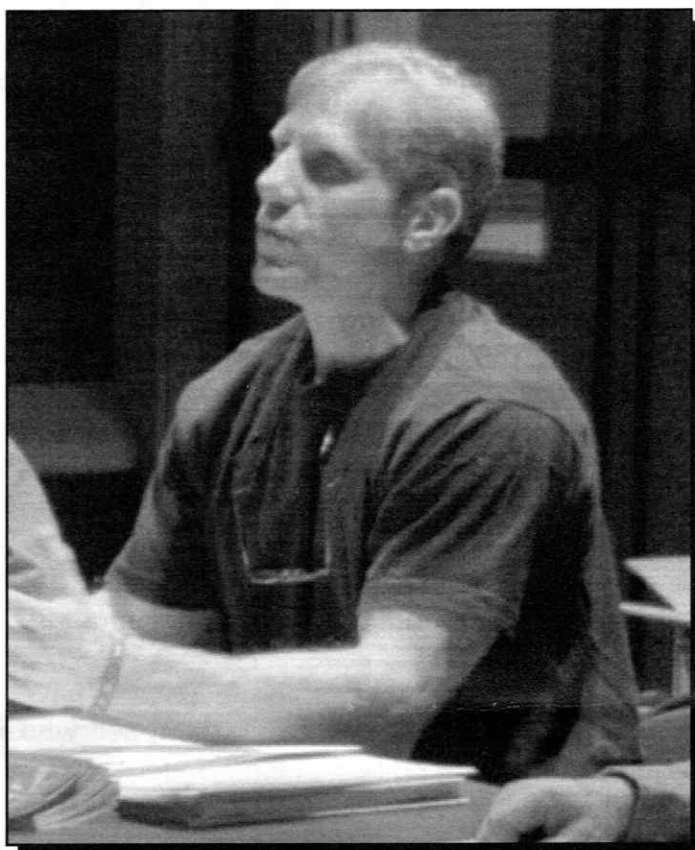
Doug Person related what fine experiences he has had in past years while operating his sailboat with these guests. They are very appreciative, as is the city.

Commodore stated that there has been excellent response for Parade of Boats volunteers. Sign-up sheet was re-circulated.

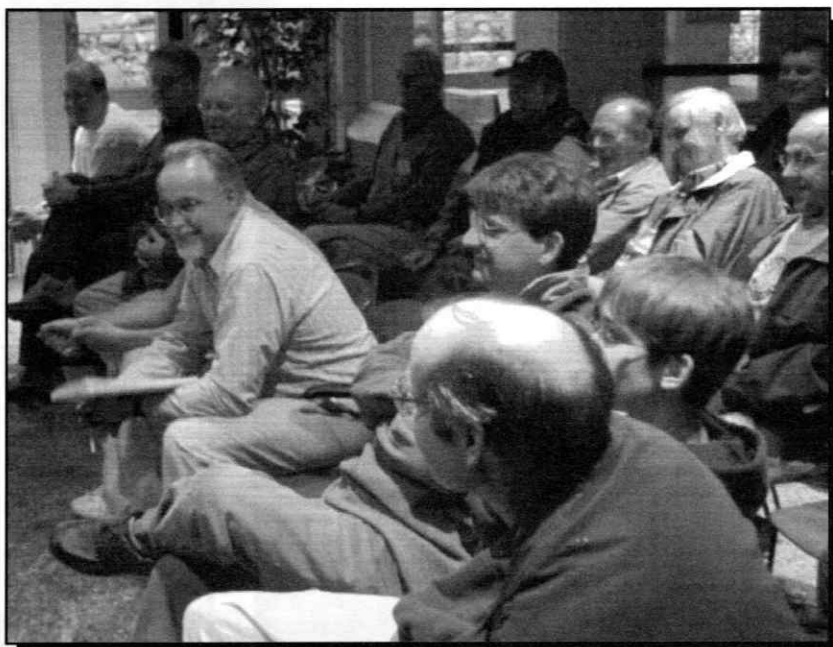
Dale Johnson had color posters and black and white flyers available for distribution to hobby shops, Centennial Lakes shops, etc.

John Bishop mentioned that as a result of the popularity of the park Centrum building, he has scheduled the Parade of Boats two years out. Mark your calendar! June 12, 2005, June 11, 2006.

Dave Bros reminded the members of the Sailboat Tune-Up Clinic scheduled for



**Bill Bach speaks to the membership.**



**April 20, 2004. In the Centrum Building. 48 members in attendance.**

Saturday April 24th at 9:30 AM....in the Centennial Lakes Garage.

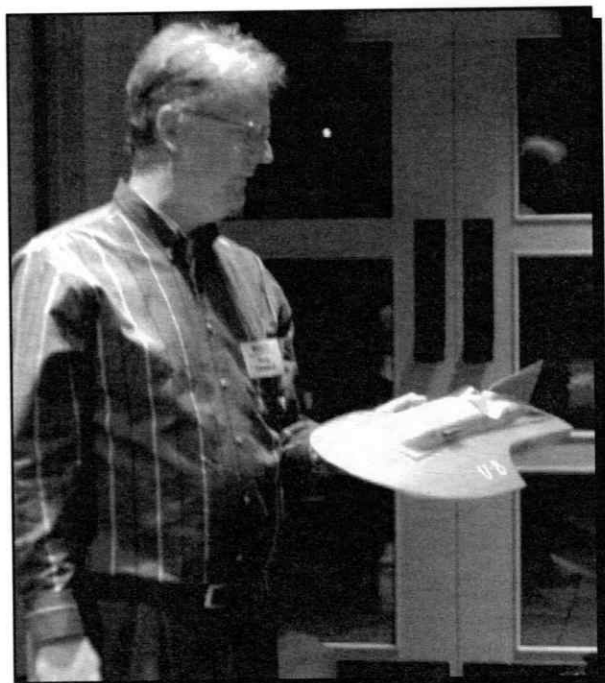
John Bishop mentioned that in a conversation with park manager, Tom Shirley, Tom stated that the pond would be chemically treated shortly prior to the Parade to ensure weed-free boating.

Andy Valentine announced the commencement of Fast-Electric boating on May 6th.

Fred Ferris mentioned that Paul Olsen and Larry Wheeler had hand shoveled about 2 1/2 yards of sand from the underwater "pile" in the north pond...all while standing in our not-so-stable retrieval boat. The two members received a round of applause. Meeting adjourned at 7:35 PM

John Bishop then introduced Bill Bach as the evening's guest speaker. Bill was Centennial Lakes Park manager when the club was conceived back in 1991. Bill gave a fifty minute talk on the formation of the club and a brief history of the early years. He then took questions from the members for about fifteen minutes.

Several members showed projects they have been working on. Including Doug Campbell who has just finished putting together a wonderful hydro kit that he offered to club members for \$60.00 nonmembers \$80.00.



Doug Campbell shows off his new hydro kit.

Following the show and tell Doug Person presented Gary Phillips with a Treasurers flag for his years of service as club treasurer.

—Jim Smith



Doug Person presents Gary Phillips with an award of appreciation for his years of service as Club Treasurer.



**EDINA MODEL YACHT CLUB**

Your contact for Yacht Club "Logo Gear" is

Doug Person

I have three fantastic catalogues filled with clothing choices you can select to have embroidered by Team Mates, Egan.

Some clothing examples include: Polo and Chambrarty Denim shirts... Sweatshirts, Jackets, Caps, Vests, or your own shirt or jacket, etc. Embroidery options include our club logo and/or burgee with your name, boat name, number, etc.

Typical costs range from about \$28.00 to \$33.00 (of course, price will depend upon the garment choice and amount of embroidery you choose)

**Fly your colors...EMYC!!**

# REGIONAL MIDWINTER REGATTA

## — THE FURTHER ADVENTURES OF THE INFAMOUS 'BOAT BOX' —

**RC Laser 2004 Regional Midwinter Regatta**  
**March 12-14, 2004 Frank Mackie Park Pond**  
**Marco Island, Florida**

**By Fred Ferris**

**A**fter loading the 'Boat Box' with 5 RC sailboats, a touring bike and roller blades I headed south early in the morning of Saturday March 6, 2004. I stopped for gas in Newman, Illinois and Cartersville, Georgia before stopping for the night in Cordelle, Georgia. Sunday morning I continued on south, stopping for gas in Tampa prior to arriving in Naples Florida. After checking into the motel, I started to check out the sailing ponds used by the Naples MYC. All but one are located in gated communities and are not available for us to use. The Vineyards pond was available and well stocked with bouys.

Monday morning I sailed at the Vineyards. I returned to the motel at 1:00 PM to meet Terry Mackey who flew to Fort Myers and drove to Naples. Terry and I returned to the pond that afternoon for some more sailing. Prior to a regatta, there is no substitute for actual stick time. More sailing on Tuesday.

Wednesday morning, at the Vineyards, we were treated to a fleet of 25 Soling 1M boats. It was not long before Terry and I were invited to sail their boats. That afternoon we drove down to Marco Island and sailed with the laser fleet at Mackie Pond.

I am not sure what we did on Thursday but I am sure some sailing was involved.

Friday morning we went to Marco and sailed in the morning. Terry had an outside activity in the afternoon and I stayed and sailed. Later in the afternoon Bill Coppage and Dale Borgeson

arrived at the pond. They also drove to Florida. Now EMYC would be represented by four members.

Saturday morning presented an on-shore wind, slightly from the left. The skippers area faces east so the wind was out of the NE. odd-even racing was used which meant that two heats were sailed for each race. The regatta got underway with most skippers utilizing the A sails. Four races were completed by the noon break. The afternoon session produced four more races for a total of eight for the day. Saturday evening there was a BBQ for the Skippers.



**Fred Ferris, Terry Mackey, Dale Borgeson and Bill Coppage.**

Sunday the wind was out of the SE or from the right. The day started with a combination of A and B sails being used. By noon most of the skippers were using the B sails. Four more races were completed by the noon break. By the end of the afternoon most of the skippers were up to the A sails as the wind was dropping off. By 3:00pm 17 races had

been completed. One additional, not for score, race was proposed that would start all the boats at the same time. All boats had A sails, the wind came up to C sail conditions and only a few boats finished.

Even though we had the 30" EMYC burgee and a Minnesota state flag flying both days, none of the EMYC skippers were in the top three. The Florida skippers

**Regatta Continues on 10**



# PARADE OF BOATS 2004 FINAL DETAILS

By John Bishop

The Parade of Model Boats show will take place on Sunday, June 13th, from 11:00 AM to 4:00 PM, with the setup beginning at 9:00 AM.

The show is planned to provide entertainment for the general public and to introduce the hobby of radio controlled model boating. But equally important, it is a chance for our club members to meet new people, display and run all types of boats, and have some fun for a day. It is our club's main event of the year and has proven to be very enjoyable and rewarding for those that participate. Be advised that if thunderstorms and rain showers are forecast or weather does exist, the Parade show will continue as an indoor display until conditions permit us to run outdoors.

The Centrum building, located in the heart of Centennial lakes development, serves as a focal point for our show. Within the building the atrium (entry area) will accommodate our membership and information tables. Overflow tables can be setup as well, if needed, to display additional boats. A room adjacent to the atrium will allow club members to store personal items such as radios and allow for charging and maintenance of equipment. This "back room" will not have public access and only those with an EMYC name tag will be allowed to enter. Charging and repairs may also take place within this area. The Fireside and Parlor rooms together will comprise the space needed for our indoor display.

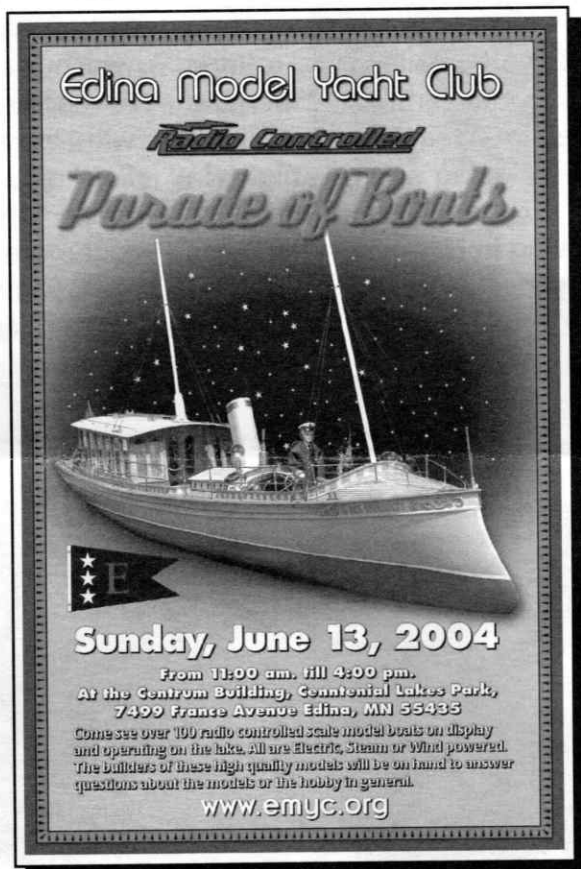
Registration will take place at your leisure before

11:00 AM at the Membership table. We'll have you list your name and the types of boats you're bringing to the show and prepare your display cards. It will be quick and simple and will provide for a more organized and professional looking show.

Indoor display is a great opportunity for you to show your boat(s) within the Centrum building and you are encouraged whenever not running to have your boat(s) in this area. The room will be watched over by EMYC members at all times. More than 200 boats can be displayed in this large 2000 square foot room. Boats will be organized on the tables according to their type. Individual information cards will be placed in front of each model on display. During the initial setup from 9:00 AM to 11:00 AM, club members will be on hand to direct the placement of models within the Centrum building for display. Please look for assistance upon your arrival. Cars may be driven up to the Centrum building before and

after the show for loading and unloading of equipment.

There will be three tables containing current projects under construction in the Builders Corner, located in the southwest part of the display room. If you have something interesting in the works that you think others might enjoy seeing, please plan to bring them and we will accommodate as many items as we have space. This display often gives those not associated with the hobby a better understanding of the work and effort involved in finishing a model boating project. If you have an interest in staffing this area anytime during the show please see John Bishop before 11:00 AM.



The ever popular Ships-in-a-Bottle table, presented by club member Donald Pearson, will be present for the fifth year in a row. Make sure you set aside a few minutes during the show to see his superb modeling talents.

The Membership and Information tables will provide information for our members and the general public. EMYC members will have access to name tags, Ships Log forms, Information Cards for models on display, and Schedule of Events sheets. The information table will act as a resource area for handing out literature. The general public can pick up information here about the hobby of radio controlled boating, the organization of the Edina Model Yacht Club, and information about the group and its activities. If you don't know the answer to a question please direct people to this area. These tables will be located in the entry area of the Centrum building.

The Central Pond located just outside of the Centrum building is where we will run our equipment during the show. The stairs just to the south-east of the display room will quickly and conveniently take us to the water. A protected running area will be setup for club members once again this year. EMYC members will control model boats within a fenced-off 25' zone adjacent to the stairs that lead down to the water.

Frequency Control will allow us to track 36+ channels for independent operation of the boats. The frequency board will be used during the entire four hour running period and if you run you will need to have a clip attached to your transmitter antenna displaying the frequency you are on. No powering up or testing of equipment (even in the back room) will be allowed unless you have secured a clip from the frequency board. If you have finished running, please return the clip promptly. Conflicts will be resolved by sharing the available time for an event, or by changing out crystals. You may want to have an extra set of crystals in case a frequency conflict arises.

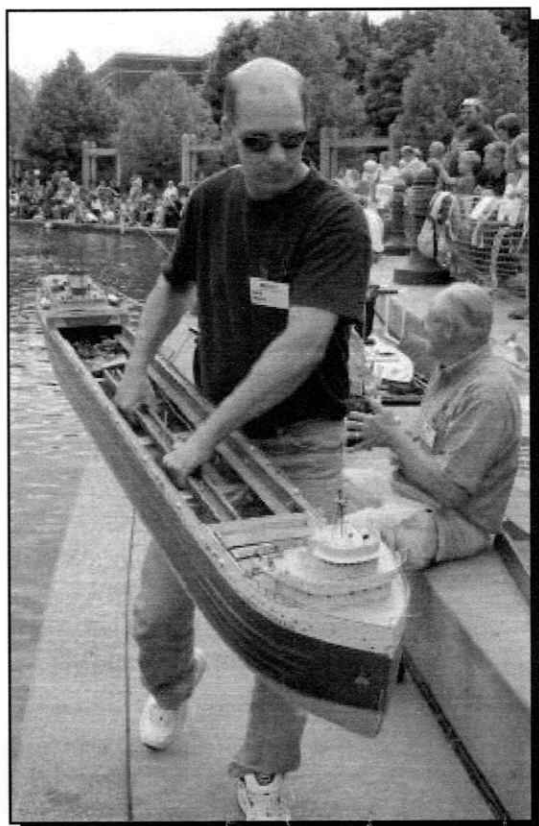
The Schedule of Events for Sunday June 13th is listed below. It begins with a two hour setup period, a one hour indoor display, followed by a four hour running period. The running program is organized in such a way that at least three opportunities to run just one type of boat will exist during the show, mak-



Don Pearson's ever popular Ships-in-a-Bottle table.

ing it possible for everyone to have plenty of time on the water. A copy of this schedule will be available at the membership table and will also be handed out just prior to the start of the show.

- 9:00 AM** Setup indoor membership and information, building, and display areas. Setup outdoor running and frequency control areas. Skim water in central pond and clean running area. Setup and test outdoor P.A. and music systems. Display signs.
- 10:45 AM** Club Meeting in Centrum building. Review details of the show including indoor display, schedule, frequency use, EMYC drawing, etc.
- 11:00 AM** Indoor Display within the Centennial Lakes Centrum Building. All boats will be on display. This is a great opportunity for club members to get reacquainted again and browse around the room to see new projects. It is also a great time for the general public to collectively see all the boats and builders in one place.
- 12:00 PM** Open Boating/Open Water A general introduction to the Edina Model Yacht Club and the hobby of radio controlled boating will be presented during this segment. Everyone is invited to run during this half-hour time period. This opening event is set up so as to show the variety and diversity of



Kirk Brust.

## Regatta From 7

know who we are and we made lots of new friends.

Bill and Dale headed for Tampa and some gulf offshore fishing, and Terry flew home Monday morning. I left Naples early Monday morning, stopped for gas in Cordele, Georgia, and stopped for the night in Marion, Illinois. Tuesday morning I got some gas and headed north stopping for gas in Janesville, Wisconsin, then home to Burnsville in time for the EMYC meeting.

The 'Boat Box' was gone for 11 days, traveled 4063 miles and burned 250 gallons of fuel. The next trip for the 'Boat Box' will be the last of July when I drive to Bakersfield, California, for the Fairwind Nationals.

—Fred Ferris

- R/C boats among the membership of the EMYC. Ships log forms will be used to describe boats on the water.
- 12:30 PM** Tugboats and Work Boats. Display of features and operating equipment on various boats. \*Special smoking barge segment. Boats with water cannons will "put out" fire.
  - 1:00 PM** Sailboats of all types and classes; Fairwinds, AC-914's, Marbleheads, EC12's, etc. Open class regatta planned by our sailing group.
  - 1:30 PM** Fast Electric Boats display of individual high speed electric boats. Racing event planned by Andy Valentine, Doug Campbell, Dan Proulx, and their high speed electric group.
  - 2:00 PM** Military Boats flotilla including PTs, destroyers, battle-ships, subs, etc.
  - 2:30 PM** Scale Boats including pleasure craft, ore carriers, paddle wheelers, steam powered, etc.
  - 3:00 PM** Tugboats and Work Boats. Display of features and operating equipment on various boats. \*Special smoking barge segment. Boats with water cannons will "put out" fire.
  - 3:30 PM** Open Boating/Open Water all types of boats allowed to run during this half-hour period. Those running past 4:00 PM will be responsible for their own frequency use.

Additional items: Food may be donated from several Centennial Lakes restaurants for EMYC consumption (details are currently pending). Food is available for purchase from the surrounding complex and covers everything from fast to fine dining. EMYC members will be able to relax within an environment of couches and chairs throughout the day in the back room. Coffee and donuts will be available in the back room as well. Benches and chairs will be set up outside for spectators' comfort. Paddle boats will be rented out but will not be allowed to run beyond the flagged-off area just east of the Centrum building. The water of Centennial Lakes will be treated 5 days prior to the show.

This newsletter is sent out to club members, local hobby shops, and several R/C boating clubs in surrounding areas. If you are not a club member but would like to participate in this event, please feel free to attend and run with us. No advance reservation is required, but please contact John Bishop at [REDACTED] for planning purposes.

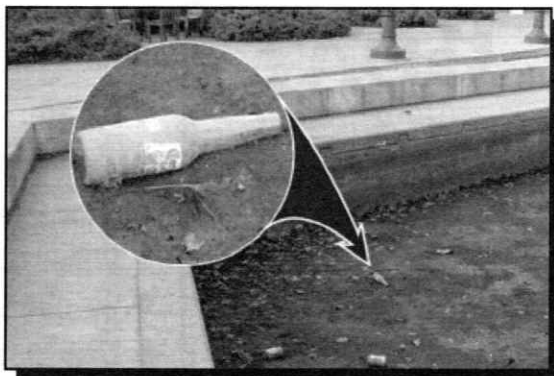
We look forward to seeing everyone on June 13th.

—John Bishop

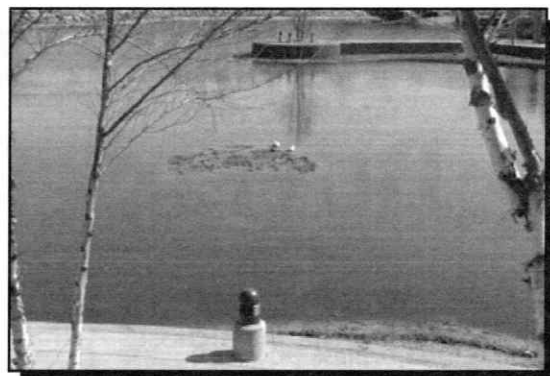


## Boating From 1

toys, beer cans and soda cans were also found in abundance. The park completed the work on the pond by Thursday April 15, in time for the week end rains. The reason they lowered the



Much debris found with water level down 28"



Sunken Island exposed.

pond is to check the seals on the liner and clean up some of the sand and debris found in the water. One of the other things they are doing is attempting to remove some of the nasty slime from the bottom, caused by years of chemically treating the ponds. Vegetation in the water dies and sinks to the bottom actually making a nutritious bed for the next batch of vegeta-

tion. They raked up much of the slime leaving it to dry in the sun, once it was dried they remove it. The pond is now as of April 19, 2004 back up to normal levels and the Open Boating Season can continue as usual.

## SAIL TUNING CLINIC A SUCCESS

By Alex Raupp

On Saturday, April 24th, we held a sail tuning event in the band-room. This was a great opportunity for people with sail boats and skills from novice to expert, to get a good start into the season. We saw boats such as Victoria, Fairwind, Seawind, some 1-meters, ODOM and Laser, exemplifying the wide variety of model sail boats in our club.



Tony Johnson shares his boating knowledge with fellow members.

Held by Tony Johnson and assisted by other club members, this event started with a sail tuning video which covered all aspects of tuning an R/C sail boat. Then, members helped each other rig, tune and build their boats using tools, screws, line, spare parts and elbow grease.

It is amazing how much some small adjustments can improve the performance of the boat. A few small adjustments can make

the difference between a boat which is a handful and a boat which runs smooth and fast.

Once the boats were tuned up and running, we all went outside to test our new setups in some cruising and racing. Since the paddle boats are not out, we are able to keep our bouys out in the North Pond.

In all, it was a successful annual event and we hope everyone

got out of it what they came to accomplish. If you have any questions about your sail boat or even which boat to choose, please do not hesitate to contact one of the sail members. Also, refer to the article in this issue on choosing a sail boat for more information.

# EMYC SAIL BOAT — BUYERS GUIDE —

The EMYC sails a number of sailboat classes. The main classes are listed below with a brief description. Our main racing classes are Laser, ODOM and Fairwind.

Information about racing days, handicapping programs, indoor winter races, national events are available on the club web site and be contacting representatives.

If you are planning on purchasing a boat for yourself or another, there are several things to consider, including boat class (type of boat), whether or not you will be racing and radio frequency. If you are not planning to race you can pick any boat that you like.

If you are planning to race, you will want to be careful in choosing a boat that is currently supported and fills your racing goals. The Fairwind is a nationally popular class and there are quite a number in the club. The Laser is a very popular one-design class amongst racers in the EMYC and does not require building skills. The ODOM is becoming a popular class at the EMYC and is a great sailor, though more technical and complex.

Another thing to consider is that we are careful to control the limited (30 available) radio channels that are used. Be sure to call a sailing representative to find which channels are available before buying any radio. Check the web site for current contact information ([www.EMYC.org](http://www.EMYC.org)).

**"If you are planning on purchasing a boat for yourself or another, there are several things to consider"**

If you are buying a boat for a gift, we strongly encourage you to contact us before purchasing a boat. Racing with boats in the same class is a large part of

the fun in RC sailing, just as in full-sized boats. The EMYC is a member of the American Model Yacht Association (AMYA) which provides information on all sanctioned classes.

See [www.AMYA.org](http://www.AMYA.org) for more information.

Before buying a boat we strongly encourage you to visit us at the north pond of Centennial Lakes park (Tuesday, Thursday and Sunday afternoon / evening) to discuss your interests and meet the people who are currently sailing these classes.

—Tony Johnson

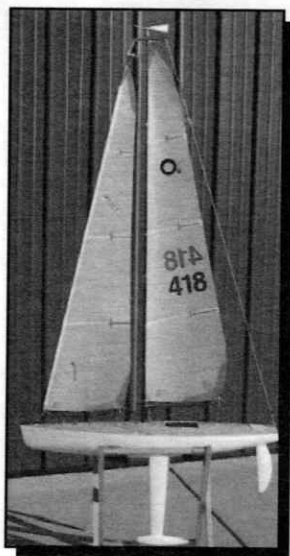
**RC Laser** – Cat rig (one sail)  
<http://sailrclaser.com>

- Length: 42 inches
- Maximum is 800 sq. in.
- ABS injected hull and deck one piece construction
- Weight: 10 lbs.
- Easy to sail and handles like a typical, cat rig, full sized boat. Strictly controlled, one design class rules.
- Cost with radio, three sails, bag and accessories: \$750
- No building - boat is ready to sail right out of the box.
- Available from local dealer: Tom Weigel [REDACTED]
- EMYC and Calhoun MYC currently race about 25 boats at Centennial Lakes and Calhoun. The class maintains an active racing schedule at both locations.
- Two fiberglass spar sets and three sails for different wind conditions available only from dealer.



## ODOM – One Design One Meter – Sloop rig (main and jib)

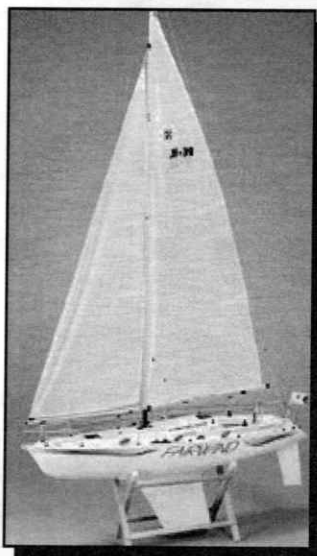
- Length: One Meter
- Sail area: 600 sq. in.
- Fiberglass hull and deck
- Weight: 7.5 lbs. minimum
- Excellent sailing characteristics in a closely controlled AMYA one design class. Excellent design, well balanced boat.
- Approximate cost with radio: \$650
- Building time > 30 hours. Requires good building skills and attention to detail to have a competitive boat.
- Available from manufacturer: [www.modelyachting.com](http://www.modelyachting.com)
- EMYC currently races 14 + boats that are nationally competitive and maintain an active racing schedule.
- Kit includes carbon fiber spars. Sails are available from several independent sail makers.



## FairWind II / 900 –

Sloop rig (main and jib)

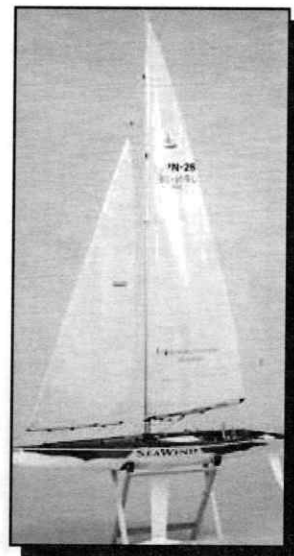
- Length: 36 inches
- Sail area: 500 sq. in.
- ABS plastic hull and deck one piece construction.
- Weight: 8 lbs. minimum
- Good sailing characteristics in a closely controlled AMYA one design class. A bit less responsive than boats with thinner keels.
- Approximate cost with radio: \$450
- Building time < 20 hours. Average building skills and some research needed to build a competitive boat.
- Available from local hobby stores or on-line.
- EMYC currently races 12 + boats that are nationally competitive and maintain an active racing schedule.
- Carbon fiber spars and after market sails are allowed by class rules and suggested.



## SeaWind –

Sloop rig (main and jib)

- Length: One Meter
- Sail Area: 600 sq. in.
- ABS plastic hull and deck one piece construction.
- Weight: 7 lbs.
- Quite good sailing characteristics in a newly sanctioned AMYA one design class. Somewhat limited by sail and mast design issues.
- Cost with radio: \$450
- Building time < 20 hours. Average building skills needed.
- Available from local hobby stores or on-line.
- EMYC currently races 6 boats in handicapped racing series with boats in other classes.
- Kit supplied jointed aluminum spars are required by class rules. Sails available from independent sail makers are allowed.

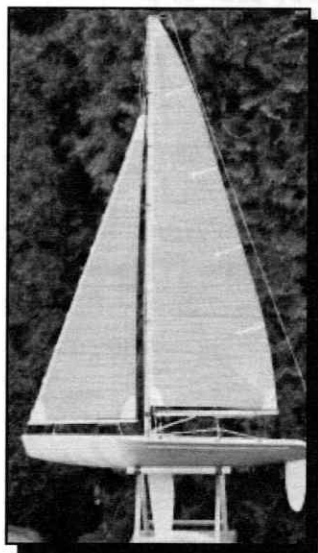




## CR 914 -

Sloop rig (main and jib)

- Length: 36 inches
- Sail Area: 600 sq. in.
- ABS plastic hull and deck one piece construction.
- Weight: 6.25 lbs.
- Excellent sailing characteristics in a closely controlled AMYA one design class. Excellent design, well balanced boat.
- Cost with radio: \$450
- Building time < 20 hours
- Available National distributor and dealer in Colorado.
- Handicapped racing is only racing available at this time. EMYC hosted the Nationals in 1995.
- There used to be 25 boats in EMYC but the class support has diminished so it is rare to see one on the water. EMYC has National and Regional first place winners..



## Soling One Meter -

Sloop rig (main and jib)

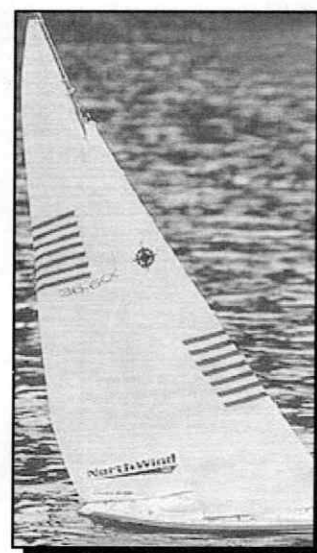
- Length: One Meter
- Sail Area: 600 sq. in.
- ABS plastic hull and deck bonded together.
- Weight: 10 lbs.
- Quite good sailing characteristics in a sanctioned AMYA one design class with large national membership. Class limits modifications to keep boat affordable.
- Cost with radio no ballast: \$240  
Completed boat with radio is \$530.
- Building time < 20 hours. Average building skills needed
- Available from manufacturer on-line.
- EMYC currently races 1 boat in handicapped racing series with boats in other classes. Good class support.
- Kit supplied wooden spars are required by class rules. Dacron, flat sails included in kit are required.



## Northwind -

Sloop rig (main and jib)

- Length: 36 inches
- Sail Area: 600 sq. in.
- ABS plastic hull and deck one piece construction.
- Weight: 7 lbs.
- Average sailing characteristics. Is not a sanctioned AMYA class at this time.
- Cost with radio: \$375
- Building time - unknown
- Available from local hobby stores or on-line.
- 3 boats in EMYC Handicapped racing is only racing available.
- Not a very well known boat and the fleet will not be likely to expand.



## REGULATED DC POWER SUPPLY



While John Bishop was searching for a new battery charger he came across one of the best deals around. Since many of the latest chargers require an external 12 v power source... either an automotive type battery or regulated DC source, John searched them out as well. He came

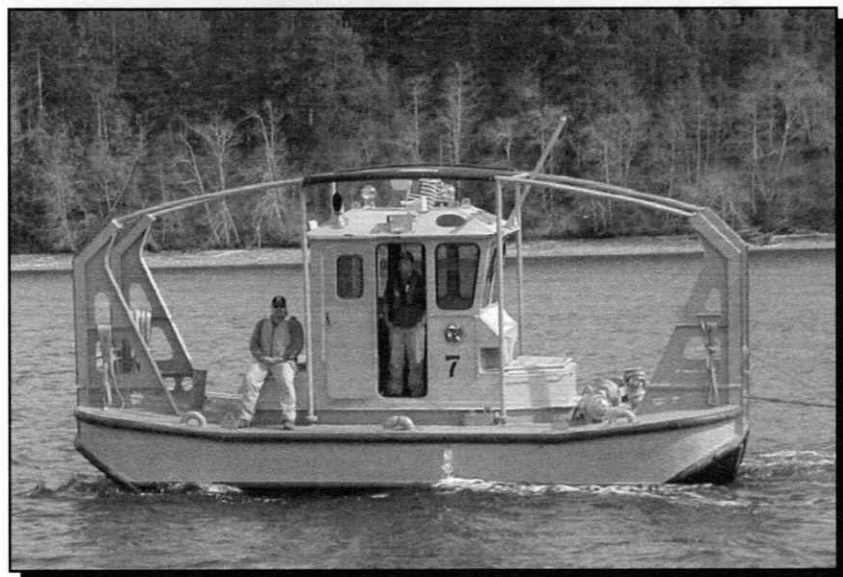
across the following: Circuit Specialists Inc. "www.circuitspecialists.com" (800) 528-1417

Regulated DC Power Supply 13.8 Volt 6 Amp (8 Amp Surge) (even has an on-off switch) Part Number CSI1862 for only \$24.95 plus shipping for 11 pounds (about ten bucks)

Shipping might be less per unit for multiple orders. This is a great price... about 1/3 what you'd pay for a typical unit from Hobbico or other hobby power source.

—Jim Smith

## MINIATURE TUG



Log Bronc

I received this photo from one of my tugboat buddies. Miniature tugs for moving rafts of logs around the Seattle area. I don't imagine they move too fast but the "roll bars" are a nice touch! Could make into a new version of the polo tug.

—Jim Smith

## SPECIAL THANKS

To all the members that contributed to this issue of the Sail & Scale. Without you this publication would be nothing.

John Bishop, Fred Ferris, Tony Johnson, Ray Johnson, Paul Olsen, Doug Person, Alex Raupp, Mike Ross, Jim Smith.

## — NOTICE — MONTHLY MEETINGS

During this time of year it is very difficult to tell exactly where the monthly meetings will be held. We will try to hold them in the Centrum Building but often times the building is not available, in that case the meeting will be switched to the Band Room in the Garage, as in the winter.

— Please check both locations. —

## - MODEL RAILROAD - AND TOY TRAIN SALE

Saturday May 22, 2004

9:00 a.m. to 3:00 p.m.

Education Building, MN State Fair

Enter at Snelling/Hoyt Avenue Gate.

Adults \$4.00

Plus free admission until 6pm. that day to the Twin City Model Railroad Museum with your hand stamp from the show.

## CLUB SHIRTS HATS ETC.

Contact:

Douglas Person

## Cub Burgees and Stickers

Contact:

Tom Weigel



**EDINA MODEL YACHT CLUB**

**Centennial Lakes Centrum  
7499 France Avenue South  
Edina, Minnesota 55435  
www.emyc.org**

Edina  
Recycles



A 04

55435#2844



## MAY MEETING

**TUESDAY, MAY 18, 2004 7:00 P.M.  
CENTENNIAL LAKES CENTRUM BUILDING**

### Presentation on ODOMs

At the May meeting Larry Wheeler will give a short presentation on the ODOM sail class.

### Special Interest Contacts:

#### Membership:

Dale Johnson

#### Scale Boating:

Tim Smalley

#### Sail Boating:

Tony Johnson

#### Fast Electric:

Andy Valentine

## 2004 Board Members

**Commodore:** Paul Olsen  
**Vice Commodore:** Tim Smalley  
**Vice Commodore:** Dave Bros  
**Vice Commodore:** Dale Johnson  
**Vice Commodore:** Keith Kaletta

**Newsletter Editors:** Dale Johnson & Alex Raupp

Please send articles by email to:

Deadline for articles to be considered for the May publication will be Monday May 24, 2004