

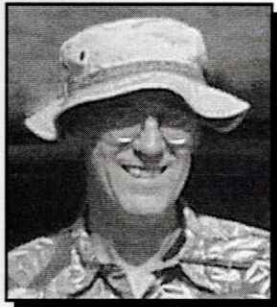
EDINA MODEL YACHT CLUB

SAIL & SCALE NEWSLETTER

MARCH 2008

VOLUME 17, NUMBER 3

END OF AN ERA



By Don Westley

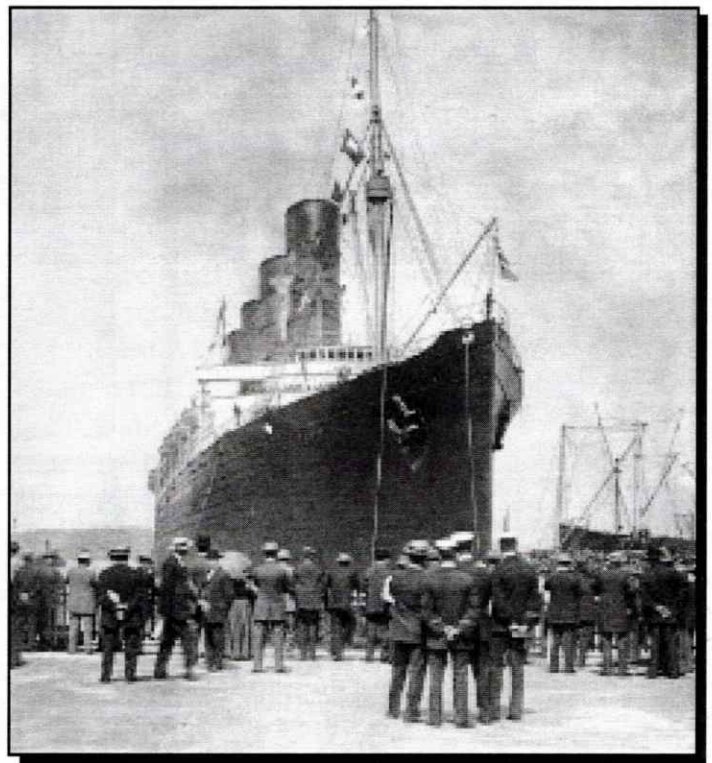
This Winter I read an interesting book that revived an old fascination of mine - Classic ocean cruise ships. This interest was initiated when I was a kid in 1956, as I watched the news media coverage of the sinking

of the beautiful Andrea Doria. This was the earliest occasion that I can recall when I was absorbed by, or even interested in, the daily news. It was such an enchanting ship, and totally unbelievable to me that it could be lost forever. I followed every stitch of information that I could find concerning the Andrea Doria for a long period after this tragic event. They even wrote articles about raising her. Wow! Exciting images for a little kid!

The book that lately rekindled this early fascination was *The Only Way To Cross* by John Maxtone-Graham. It covers the "Golden era of the great Atlantic express liners, from the Mauretania to the France and the Queen Elizabeth II." It is a good read for anyone who enjoys these ships and the uninhibited splendor that was reflected in their design. Another author of many photographic histories of these ships that should be mentioned is maritime historian, William Miller.

These great liners of the past have largely disappeared

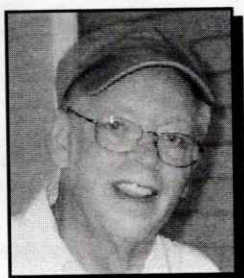
due to air travel, economics, and tightening of maritime regulations. The new SOLAS (Safety Of Life At Sea act, US Congress Public Law 89-777) regulations coming into force in 2010 will virtually eliminate the very few that remain. In my opinion, the monster, floating hotel cruise



SCHEDULE OF EVENTS:

Wed, March 19	7PM, Merriam Library, Fairview and Marshall, St. Paul....Marsh Gabriel, "Sailing and Rigging"	
April 20	Sunday Afternoon	Centennial Lakes - Spring Shakedown Day
April, Date TBD	Saturday Morning	Centennial Lakes 3-Pond Race
May, Date TBD	Saturday and Sunday Morning	Over 45-inch Sailboat Regatta and Enduro

COMMODORE'S CORNER



By Al Bickford

Mister Webster defines doldrums as, "Equatorial ocean regions noted for dead calms," and, "low spirits; dull, and

gloomy, listless feelings."

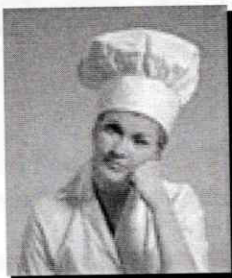
I must admit that I've got them. Even though the sun is shining, the water is still frozen, and I've cycled my batteries so often now that I think that even they're getting bored. Yes, I'm slowly putting together a "super tug" that will be a lot of fun when finished - all of the mechanicals have been collected, the electrical stuff is sketched out and has been checked, even the paint scheme has been decided. Now to start the hull. Me doing a fiberglass hull from scratch for the first time - I'll keep you posted on the progress - or lack of it as I head into these uncharted waters. As the man said just before he went over Niagara Falls in a barrel, "This is going to be interesting..." The bottom line is that I need to get something with a rudder - wet.

I guess the best way for me to cure the doldrums is to look forward to spring and realize that we've got only slightly more than a month before our shakedown day on Sunday April 20th, followed the next week by the Three Pond Races. I must admit that I'm really anxious to pass-on the "slow moving vehicle" sign that I earned last year for coming in last with my sailboat. I go by its pizza-box resting place every day on my way out, and the thing is beginning to taunt me. At this rate, pretty soon I'll be honing props and sharpening keels 'til midnight!

Remember, our next meeting is on Tuesday the 18th this month, so be sure to bring your boat projects and gizmos for a show-and-tell and don't forget to bring your dues if you haven't yet. So here's looking forward to some...

Smooth sailing - Al Bickford

BUILD A GINGERBREAD LIGHTHOUSE



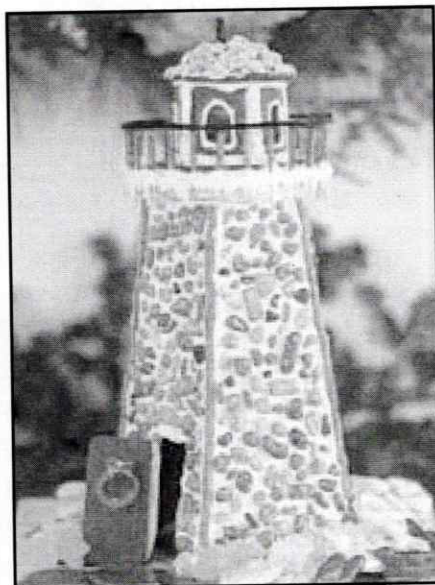
By Anne Korzaway

Here's a different idea for a gingerbread house with a nautical theme, yah. Use *meine lieblich* gingerbread recipe to make a base, sidewalls, light panels, roof pieces and door. Crushed Lifesavers or small jelly beans are used for the stone walls. Pretzels are used for trim and railings.

Sehr gut! This project would make a great centerpiece for the tables at the Dry Dock Party., *Meine Freunde nautischen.*

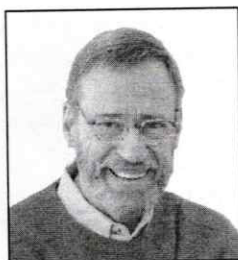
The gingerbread recipe, instructions, templates and additional information can be found at

<http://www.coastalliving.com/coastal/food/entertaining/article/0,14587,493730,00.html>



Gingerbread Ingredients:

- 1 cup butter, softened
- 1 cup firmly packed dark brown sugar
- 2 eggs
- 1 cup unsulphured molasses
- 6 cups all-purpose flour
- 1 tablespoon baking soda
- 1 1/2 teaspoons baking powder
- 4 teaspoons ground ginger
- 4 teaspoons ground cinnamon
- 1 1/2 teaspoons ground cloves
- 1 1/2 teaspoons salt
- 1 teaspoon pepper



EDINA MODEL YACHT CLUB

Your contact for "Logo Gear" is
Doug Person

I have three fantastic catalogues filled with clothing choices you can select to have embroidered by Team Mates, Egan.

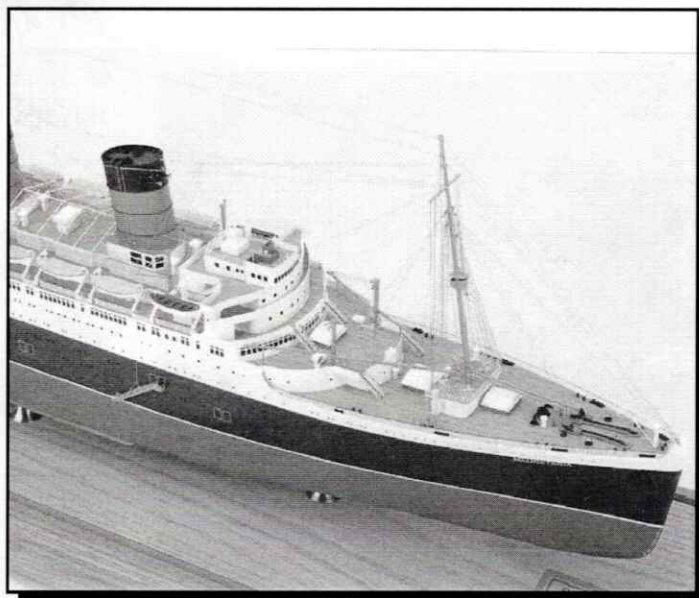
Embroidery options include our club logo and/or burgee with your name, boat name, number, etc.

Fly your colors...EMYC!!

END OF AN ERA, CONTINUED

liners now being built do not come remotely close to the attractive classic design of earlier liners such as the Lusitania, Ile de France, Queen Mary, Queen Elizabeth, Olympic, Normandie, Rex, and others. These same regulations already have or will soon terminate the limited chances of survival of even the newer, smaller attractive liners like the Olympia, Oceanic, San Giorgio, Kungsholm, Ausonia, and Queen Elizabeth II in the next few years, along with large numbers of riverboats and other historical ships. You had better sign up for a cruise soon if you want the experience! The only survivors of this era will very soon be static displays like the RMS Queen Mary in California or the S/S Rotterdam in the Netherlands. The S/S Independence, built in 1950 by Bethlehem Steel, was towed out of San Francisco this month and is currently on its way to shipbreakers in India. Cruise tickets are currently being sold for the final cruise of the Queen Elizabeth II in November.

With the renewal of my latent interest in these



ships, I considered the possibility of acquiring a model of one of these great liners. Well, surprise! It is getting difficult to find any, unless you desire to model only the Titanic! The few liners that were once available, such as the France, Normandie, Lusitania, Mauretania, Oriana, Europa, President Cleveland, or the United States are no longer being produced. Back to scratchbuild!

Recently, I have spent some time on the internet digging for cruise liner information. A plethora of historical information and pictures is available from many websites involving the cruise liner era. Soon, however, one realizes that you keep seeing the same limited number of photographs, and you become acutely aware that the near future for these few remaining ships is bleak and terminal. There is even a CD that has been produced by a maritime historian that covers his trip to Alang, India, where the largest shipbreaker in the world is slowly turning the last cruise liners into scrap. For a memory trip, there are many excellent informative sites available, such as:

www.oceanlinermuseum.co.uk/lobby.html/
www.maritimematters.com/
www.titanic-model.com/
www.lostliners.com/

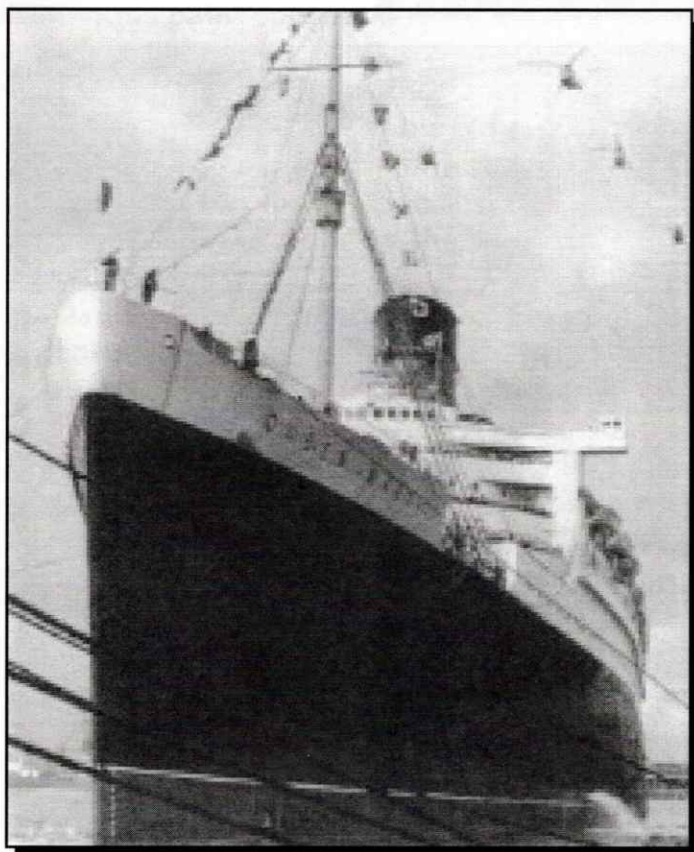


FOTO FEST - SPRING REMINDERS

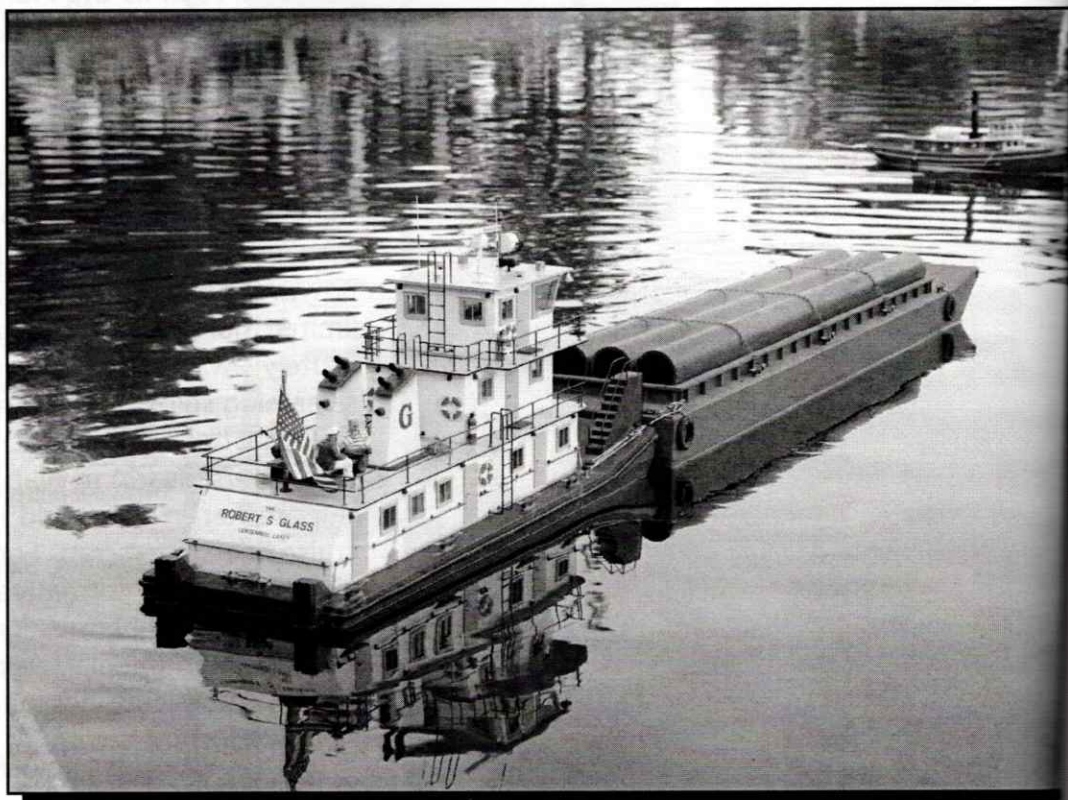


Photo Credits: John Bishop

FEBRUARY MEETING REPORT

By Martin Gale and Bob Stay

The Commodore's flag was officially presented to Al Bickford by Doug Person. Al is working on a tugboat that may be big enough to fly the flag.

Kevin Waldo updated progress on his PT 109. A lot of work was done since we saw the kit still in the box at the last meeting. Great work, Kevin.

Ben Radenbaugh showed two small lighting units, purchased for only a few dollars. One is a flickering orange light that could simulate the fire in a boiler or a flickering lantern. The other is a moisture sensor that lights an LED when the sensor is even slightly wetted. Either my memory or Ben's is slipping, because I don't know where he got them!

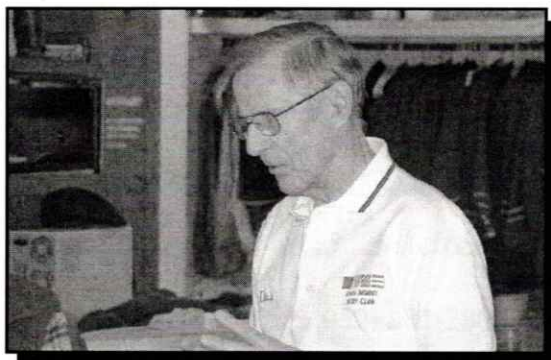
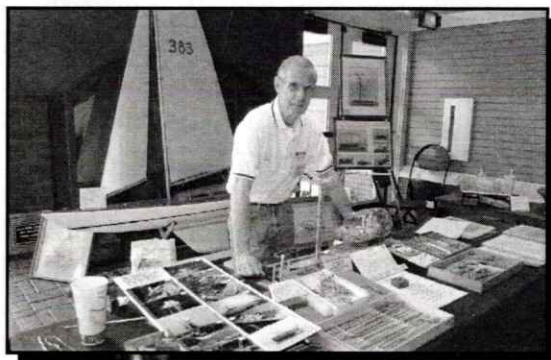
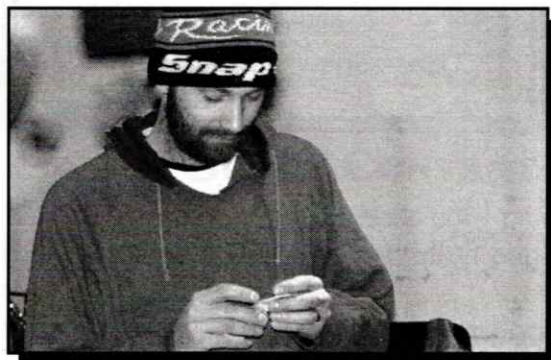
Joe aka "EBay" Steele urged the membership to visit and to post on our www.emyc.org website, and to use UTube for posting video and Photobucket for pictures. He also showed a classic shovelnose hydro with a really great looking gloss red finish. He used Rustoleum and had some primer/finish-coat compatability issues. Numerous paint suggestions were made for future work, but Joe will likely use any paint he can find on EBay. Members present voted that Joe should use the early WWII version of the sail of his Bluefish submarine, another great looking model that he showed at the meeting.

Joe, speaking for the club, also thanked Dale Johnson for all his update work on the website. Great job, Dale. Thank you!

Dan Lewandowski showed a Spektrum DX7 with the antenna re-mounted inside the case. The modification was shown in last months Sail'N'Scale.

The highlight of the night was Don Pearson's presentation on miniature ships-in-a-bottle. Don showed some of his custom made tools, shared some of his methods in detail, discussed details of precision bottle sizing, and fielded numerous questions. Don had examples of some tools, an actual model, and samples of plans that he uses for construction. His models start at about \$1600 and can easily get to over \$5000.

Don is a member of other groups and regularly meets other ship-in-bottle modelers. More about Don and his bottled nautical works of art can be found in the February 2008 Sail'N'Scale.



MODEL BUILDERS SCALE CHART

SCALE	Fraction In./Ft.	Decimal In./Ft.	6' Man Height	Ft./In.	Common Use
1:1		12.0	72.0"	0.08	Life-Size
1:2		6.0	36.0"	0.17	One Half Life-Size
1:4		3.0	18.0"	0.33	One Quarter Life-Size
1:6		2.0	12.0"	0.50	Live Steam Trains
1:8		1.5	9.0"	0.67	Live Steam Trains, R/C Cars
1:10		1.2	7.2"	0.83	
1:12		1.0	6.0"	1.00	Doll House Scale
1:16	3/4	.750	4.5"	1.33	Live Steam Trains, 120mm Figures
1:18		.667	4.0"	1.50	Automobile Kits
1:20	19/32	.600	3.6"	1.67	90mm Figures
1:22.5	17/32	.533	3.2"	1.88	"G" Gauge Trains
1:24	1/2	.500	3.0"	2.00	77mm Figures
1:25	31/64	.480	2.88"	2.08	Metric "Equivalent" of 1:24 Kits
1:32	3/8	.375	2.25"	2.67	54mm Fig's., Aircraft Kits, #1 Gauge
1:35	11/32	.343	2.06"	2.92	Armor Kits
1:43	9/32	.279	1.67"	3.58	Die Cast Automobiles
1:45+	17/64	.266	1.59"	3.76	"O" Gauge Trains (Early)
1:48	1/4	.250	1.50"	4.00	"O" Gauge Trains (Common)
1:50	15/64	.240	1.44"	4.17	Metric "Equivalent" of 1:48 Kits
1:64	3/16	.188	1.13"	5.33	"S" Gauge Trains, Ship Models
1:72	11/64	.167	1.00"	6.00	WWII Aircraft ID Models
1:76	5/32	.158	.95"	6.33	Armor Kits
1:87+	9/64	.138	.83"	7.26	"HO" Gauge (Exactly 3.5 mm / ft.)
1:96	1/8	.125	.75"	8.00	Ship Models
1:100		.120	.72"	8.33	Aircraft Kits
1:120		.100	.60"	10.00	"TT" Gauge Trains
1:128	3/32	.094	.56"	10.67	
1:144		.083	.50"	12.00	Aircraft Kits
1:160		.075	.45"	13.33	"N" Gauge Trains
1:192	1/16	.063	.38"	16.00	Ship Models
1:220	3/64	.055	.33"	18.33	"Z" Gauge Trains
1:300		.040	.24"	25.00	Plastic Ship Model Kits
1:350		.034	.21"	29.17	Plastic Ship Model Kits
1:384	1/32	.031	.19"	32.00	
1:432		.028	.17"	36.00	WWII Aircraft ID Models (Miniature)
1:500		.024	.14"	41.67	WWII Ship ID Models (Teacher's Scale)
1:700		.017	.10"	58.33	Plastic Ship Models Kits
1:720		.017	.10"	60.00	Plastic Ship Models Kits
1:768	1/64	.016	.09"	64.00	
1:1200		.010	.06"	100.00	WWII Ship ID Models (Small scale)
1:1250		.010	.06"	104.00	Modern Cast Metal Ship Models
1:2400		.005	.03"	200.00	War Games (Ships)
1:3000		.004	.02"	250.00	War Games (Ships)

- Jim Smith 2008

NEWS FROM OTHER CLUBS

Nautical Model Shipbuilders Society, St. Paul

Capt. Marsh Gabriel will be presenting at the Wednesday, March 19 meeting at 7PM. The club meets at the Merriam Library at Fairview and Marshall Avenues in St. Paul. The topic will be Sailing, Rigging and Q&A

NAMBA

Dan Proulx will be keeping us posted through the year on NAMBA news, events and activities. We'll also try to have a copy of the NAMBA newsletter, Propwash, at the monthly meetings. Stop by this season to see these amazing fast

NAUTICAL KNOW-IT-ALL

Maritime Math

This month, warm up your calculator and follow plenty of clues to get to the bottom of this problem and become "the Nautical Know-It-All"...

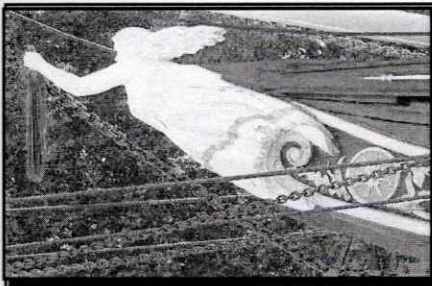
In what year did Columbus sail the ocean blue?
Multiply that number by the Volume number of this issue.

Now multiply by the number of masts on a frigate.
OK so far? Divide by the weight of a ball from a 12 pound gun.

This problem is beginning to stink.
Multiply by the length of a Soling 50, and then simply subtract two dozen more than 39,000.

Whatever you have so far, divide by the number of seas around the globe.

Now, do a flip to see where you are.
(Answer at the meeting if you can't read numbers, even standing on your head.)



Last month there was no correct answer. Heck, there were no answers at all. Give it a try this month. Can you name the ship that has this famous figurehead? Hint: "Tea time."

SPECIAL THANKS

To all the members that contributed to this issue of the Sail & Scale. Without you this publication would be a lot thinner:

Al Bickford, Dale Johnson, Alex Raupp, Jim Smith, John Bishop, Bob Stay, Martin Gale, Dan Lewandowski and Anne Korzaway.

PLACE YOUR AD HERE!

Do you have items to sell?

Looking to buy?

Place a free ad right here in
Sail & Scale.

Contact Dan Lewandowski.

SAIL & SCALE CONTENT

Our newsletter *really* needs your pictures, articles, news items and other content to make up the Sail & Scale pages that you so look forward to reading. Otherwise, Anne Korzaway may be a regular feature. We can help you with writing, picture format questions and generally provide assistance to get your content published.

If anyone is interested in learning the exciting and challenging skills for publishing this newsletter, please let me know. Dale Johnson, the "Professor of Publishing" will be your coach and mentor, as he is mine, and you can even assist in the actual editing and publishing!

Please contact Dan at [REDACTED].

CLUB SHIRTS HATS ETC.

Contact:

Douglas Person [REDACTED]

Cub Burgees and Stickers

Contact:

Mickey Kiriara [REDACTED]



EDINA MODEL YACHT CLUB

Centennial Lakes Centrum
7499 France Avenue South
Edina, Minnesota 55435
www.emyc.org

MARCH MEETING

TUESDAY, MARCH 18, 2008 7:00 P.M.
CENTENNIAL LAKES GARAGE BAND ROOM

AGENDA:

Picture Night (again!) Member "file" photos update
- by John Bishop
Show'n'Tell
Spring Planning - "First to Float" Contest

Special Interest Contacts:

Membership:

Ray Meifert [REDACTED] rmeifert@emyc.org

Scale Boating:

Tim Smalley [REDACTED] tsmalley@emyc.org

Sail Boating:

Tony Johnson [REDACTED] tjohnson@emyc.org

Fast Electric:

Dan Proulx [REDACTED] dproulx@emyc.org

2008 Board Members

Commodore: Al Bickford
Vice Commodore: Ben Radenbaugh
Vice Commodore: Vern Grimes
Vice Commodore: Paul Olsen
Vice Commodore: Don Pearson
Secretary: Don Westley
Treasurer: Mickey Kiriara

The **Edina Model Yacht Club Sail & Scale Newsletter** is published monthly except for December.

Newsletter Editor: Dan Lewandowski
[REDACTED]
dlewandowski@emyc.org
Webmaster: Dale Johnson
djohnson@emyc.org

Please send articles by email to:
dlewandowski@emyc.org

Deadline for articles to be considered for the April publication will be Friday, March 28, 2008.