

SAIL & SCALE



NEWSLETTER OF THE EDINA MODEL YACHT CLUB

MARCH 1994

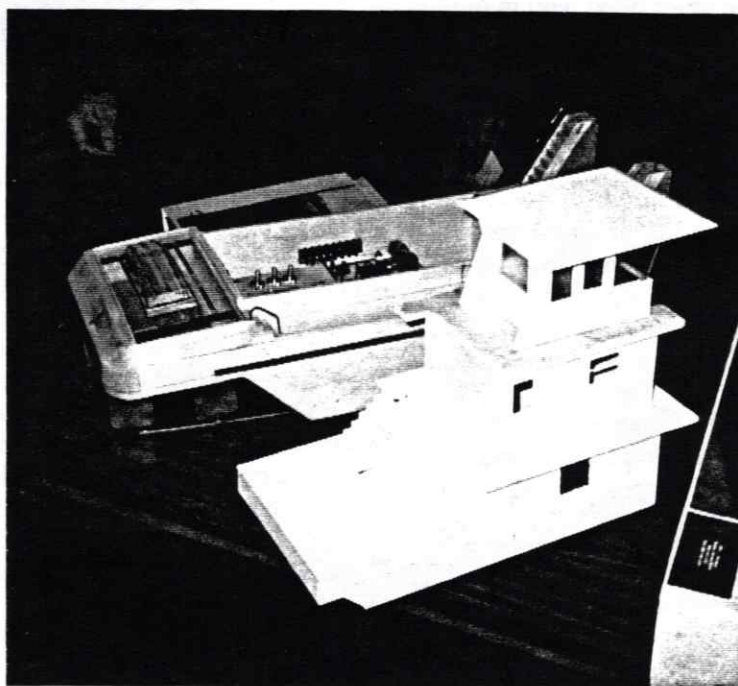
VOLUME 3, NUMBER 3

FEBRUARY'S MEETING

Last Months meeting had boats displayed by Jeff McCabe, Bill Wood, and Paul Olsen. Jeff brought in his 1/2" scale Harbor Boat Boggs Landing "C.D. Wilson". Jeff obtained scale drawings from Western Rivers Boat Works from Joe E. Brown. He then modified them a little to look like the boats from the Upper Level Barge Services in St. Paul. The real boats are 55' x 22' and have a 7' draft. Twin screws and a 6 unit rudder system make up the power end of things. His model expects to weigh in at 30 pounds. Those interested can check out the article by Joe E. Brown in the Spring 1994 issue of *U.S. Boat and Ship Modeler*.

Bill Wood brought in his partially finished Chris- Craft Cobra from Dumas Boats. Bill won the boat at last years Parade of Boats and hopes to have it ready for the pond this year.

Paul Olsen showed a beautiful 3' display version of his sail boat that is pictured in our article in *U.S. Boat and Ship Modeler*.



SERIES SAIL RACING SCHEDULE FOR 1994

by Tony Johnson

This years racing schedule is being structured to include 2 or 3 racing series. "What level does this mean to me?" you may ask.

Series racing is a scoring system that will award you points for your best 6 races during a series composed of 9 races. The top racers with the lowest point totals will be the winners of the series and will receive an award and recognition in the newsletter. Your level of participation may be no different than in previous years if you choose to race occasionally and enjoy participation in the race on a given day.

On the other hand, you may actively wish to participate in the majority of the races in a series. If you choose this level of participation you will be accumulating sufficient points to be in contention in the series. It is not necessary for a racer to declare that they are competing in a series, merely attending the races will automatically include you. Series scoring will be announced in the newsletter for only the highest placing positions so you will not need to worry about performing poorly in a series because you have chosen to participate in only a few of the races.

We expect to establish either 2 or 3 race series during the season which will be combined to award season standings. The season totals will again be published in the newsletter and winners will receive awards (possibly to include inscription on an annual trophy displayed at the Centennial Lakes building. Please let me know your thoughts on this program. It is proposed to increase the level of fun of racing with the Edina Model Yacht Club.

SUPERIOR SAILING

by Ralph Peter

That's Lake Superior sailing. Last year 15 club members chartered three, thirty four sail boats for three days of sailing in Apostles Islands. We had such a good time I thought we could do it again this year. A rough estimate of the cost is about \$150 per person including the charter and provisions for the three day mid week special.

I'm also thinking of a second cruise. This would be a 6 day trip sailing from Bayfield Wisconsin and circumnavigating Isle Royal. Isle Royal is about a 150 miles northeast of Bayfield. This trip would include two, 20 to 24 hour passages across Lake Superior to and from Isle Royal. The actual circumnavigation of the island would be a series of 2 day sails of about 8 hours each. The estimated cost of this trip would be about \$375 per person for four people, including the charter and provisions.

No plans have been made, I would first like to see if there is any interest in either of these trips. The Apostle Island trip would be in July and the Isle Royal trip would be in August. If anybody is interested please call me at [REDACTED]

CALENDAR OF EVENTS

April 1

Deadlines for Articles, Classifieds, Ads for the March Newsletter

Mail to:

Doug Campbell
[REDACTED]

March 7, 1:30 to 3:00

Lecture on Minnesota Shipwrecks
Penn Lake Library
88th and Penn Avenue
FREE Admission

March 9, 6:30 P.M.

EMYC Board Meeting
Location to be Announced

March 15, 7:00 P.M.

EMYC Meeting
Centennial Lakes Band Room

(Preliminary)

May 1, 5:00 P.M.

Free Sailing at the South Pond
6:30 P.M. - Club Racer Race

June 12 Preliminary)

Parade of Boats

EMYC MARKETING

by Ralph Peter

Since the last newsletter, drafts have been prepared of a full size color advertising poster, an outline of contents and the cover letter for an information packet to be sent to people inquiring about the club, a list and letter of introduction to possible newsletter advertisers, and a "welcome to the club" letter to new members.

Prior to going public, these drafts must be reviewed and approved by the board. Copies have been mailed to the board members, however a review and approval meeting has not been set up.

MEMBER NOTES

The Edina Model Yacht Club wishes to welcome the following new members to our organization:

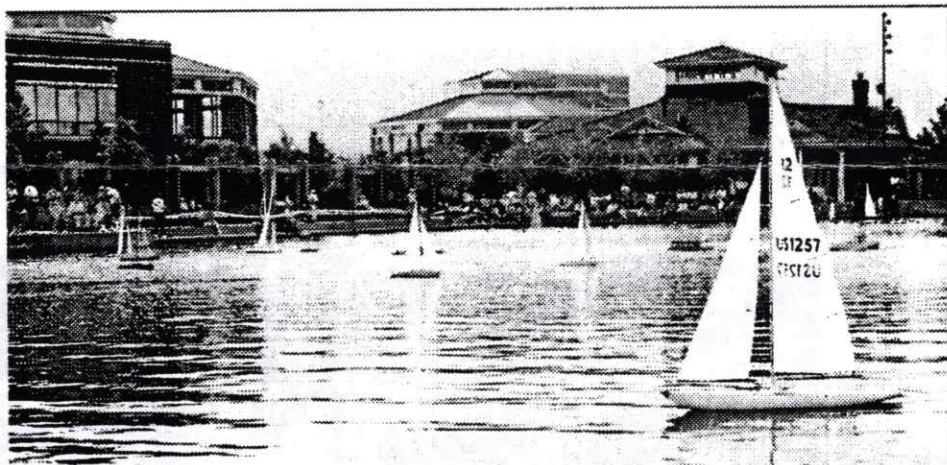
Johann Brentrup

C.J. VanVoorhis

Douglas O. deShazer
-owns Chris Craft Runabout,
Tugboat, and Sailboat

U.S. BOAT AND SHIP ARTICLE

Just in case you haven't heard by this time, this Spring's issue of U.S. Boat and Ship Modeler has a nice 3 page feature article about the club along with a photo inset on the cover of Ralph Peter's Robbe Schooner. There are some nice pond photos in there and a good shot of Paul Olsen's sail boat. My last visit to Shinder's Book Store in Edina saw a good amount of copies on the stands, so it looks like those of you that want the issue should have no problem in getting it in the metro area.



Club member Bob Lund, left, and his wife Sherry Lund, right, staff the information booth at EMYC's "Parade of Boats." The booth displayed RC boats in various stages of construction and provided information about EMYC.

MODEL YACHT SAILING HAS ENDURED IN MARBLEHEAD

By George Derringer

Marblehead's sailing heritage will be demonstrated once more in 1994 with a big celebration of 100 years of organized model yacht sailing here.

The town takes a back seat to nobody in-the world of American model yachts, say members of the Marblehead Model Yacht Club, the group that races its models every summer Sunday at Redd's Pond. Indeed, Marblehead is home to the most popular model yacht class, the M-class, in the world. Roy F. Clough designed the first M-(for

Marblehead) class boat in 1931, and It quickly gained popularity that is still growing. Model yacht sailors from 130 clubs in other parts of the country will no doubt bring M-class boats with them for a Centennial Regatta on the weekend of May 14-15.

Members of the Marblehead club, organized in 1925 as successor to the Marblehead Midget Yacht Club, formed in 1894, point with pride to their heritage and the fact that racing has always been at Redd's Pond.

"Internationally - and there are model yacht clubs in many countries - the M-class design is the world's most popular," says Greg Worth, who has a full-time business on Washington Street, which designs and builds model yachts

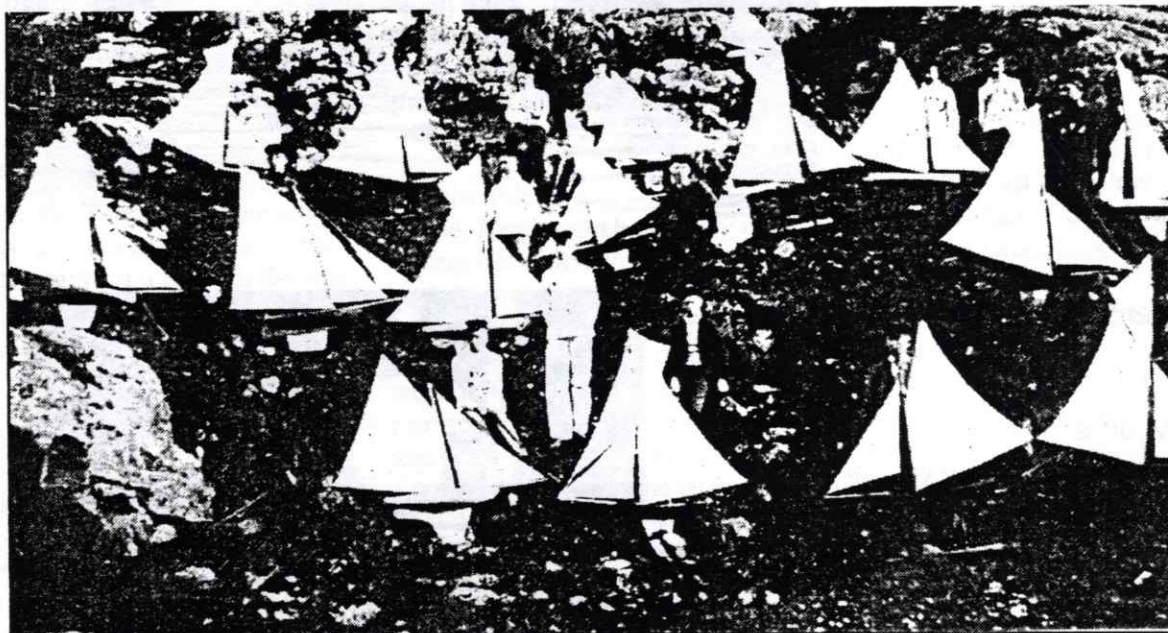
While approximately 11,400 model yachts are raced regularly in the United States. the sport is even

more popular in Europe, says John Snow, secretary of the local club. "Model yacht racing started in Europe and there are clubs in Germany, England, France, Italy, Scandinavia, Japan, South Africa and other places," Snow says.

Indeed, Worth says the biggest order he ever filled was for five M-class boats, sold and delivered ready-to-sail to an owner of the Porsche company in Austria.

Originally, Marblehead 'midget yachts' were mostly raced by children and young adults. The first boats were mostly 24 inches long and modeled after full-size designs of the period, gaff-rigged with bowsprits and very large sails extending well beyond the hulls beneath.

When full-sized boats adopted Marconi rigs, so did their little brothers. And, in the early 1900s, Marblehead model sailing spawned formation of the



The early years — The hillside is crowded with gaff-rigged model yachts and their owners in this picture from the late 1890s, when racing at Redd's Pond was already a tradition.

'94 Parade of Model Boats

by John Bishop

Sunday June 12th has been officially selected as the date for the Edina Model Yacht Club '94 Parade of Model Boats show. This day was chosen so as to guarantee the use of the centrum building, operate under favorable temperature conditions, optimize members' interest and participation in the show, and not interfere with family plans around end of the school year/graduation activities. The exact time of the event has not yet been scheduled and those times will be dependent upon scheduled activities and a planned outdoor concert which usually follows our show. You can expect the on-water running events and indoor display area to operate for an approximate six hour duration. Many of the details will be refined and finalized during the next twelve weeks.

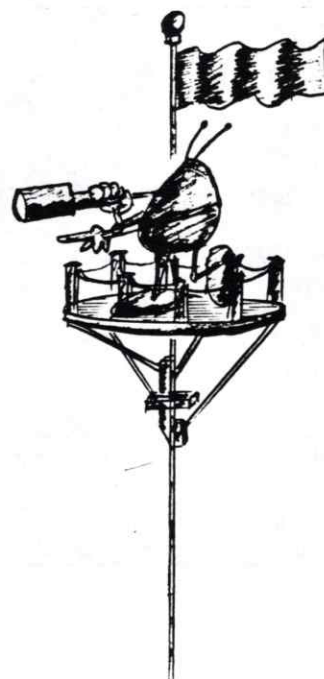
In order for the show to be another successful EMYC event, we are asking all interested members to become involved in some aspect of the categories listed below:

- Event Coordination and Supervision
- Master of Ceremonies and Public Announcements
- Activities and Events Schedule
- Advertising/Promotion
- Indoor Static Display
- Indoor Building Projects
- Indoor EMYC Membership/General Information
- Frequency Control
- Product Donations from Manufacturers

Please do not miss out on our next club meeting as the Parade planning will begin during this next get-together. We will discuss the listed categories and begin to assign group leaders for each of these areas. If you have a specific interest in any area(s) and will not be present at the meeting, please contact John Bishop at [REDACTED] as soon as possible.

The following is an approximate time line for the EMYC '94 Parade of Model Boats:

- Tuesday, March 15th, club meeting
Discuss Parade show and objectives
Review past shows' successes and drawbacks Suggest new ideas for activities and organization
Define and modify categories listed above
Appoint interested members to head specific categories
Establish goals to be accomplished for next meeting
- Tuesday, April 19th, club meeting
Update activities and events for the Parade
Review progress of categories from representative leaders
Identify potential problems and suggest possible solutions
Establish goals to be accomplished for next meeting
- Tuesday, May 17th, club meeting
Finalize and summarize Parade schedule
Review progress of categories from representative leaders
Discuss final arrangements and deadlines for the show
- Sunday, June 12th, '94 Parade of Model Boats show
EMYC members setup two hours prior to start of show
EMYC meeting one hour prior to start of show



Edina Model Yacht Club

1993 Membership

March 1, 1994

Name	City	Boat(s)
Allen, Chris	Bloomington	F
Allen, Mike	Bloomington	F
Anderson, Glenn	St. Paul	OQ
Anderson, Ralph	Richfield	F
Bach, Bill	Bloomington	F
Baskerville, Marty	Edina	F
Bishop, John	Bloomington	FS
Bolin, Jim	Minneapolis	F
Bouck, David	Edina	O
Brentrup, Johann	New Hope	WC
Butler, David	Bloomington	F
Campbell, Doug	West St. Paul	FS
Colehour, Jim	Bloomington	F
DeShazer, Douglas	Omaha, NE	P
Edge, Dick	St. Paul	P
Erickson, Tom	Edina	F
Field, Orrin	Edina	F
Flint, Roger	Bloomington	F
Gavrilescu, Bob	St. Paul	PS
Gjerness, Dave	Minneapolis	F
Hansing, Robert	Edina	CQ
Hanson, Joel	Brooklyn Park	FET
Heggen, Eugene	San Martin, CA	F
Horan, Larry	Edina	P
Johnston, Jim	Edina	FP
Johnson, Steve	Anoka	F
Johnson, Ryan	Excelsior	F
Johnson, Tony	Excelsior	F
Kellerman, Robert	Vadnais Hgts	F
Kjellberg, Dick	South St. Paul	FMT
Kosa, John	St. Louis Park	
Kuphal, Edward	Edina	FE
Lindsey, Bob	Edina	F
Lund, Robert	Bloomington	FP
McCabe, Jeff	Bloomington	FT
McKnight, Deborah	Edina	
Metz, Stephen	St. Paul	O
Miller, Mary	Edina	F
Musselman, Tim	Richfield	C
O'Conner, Mike	White Bear Lake	F
Olsen, Paul	Bloomington	FMOT
Peter, Ralph	Minneapolis	FO
Phillips, Gary	Apple Valley	FWTS
Proulx, Dan	Crystal	
Rusk, Steven	Edina	E
Savoie, Kathryn	Edina	F
Schroeder, Ron	Bloomington	O
Shea, Lincoln	Edina	
Siemers, Ryan	Edina	S
Sigvertsen, Jene	Inver Grove Hts	MO
Simenson, Myron	Richfield	FS
Smith, James	Bloomington	FPT
Stoltenberg, Ken	Rochester	OC
Trutwin, Mike	St. Paul	FO
Ulmer, David	Richfield	F
VanVoorhis, C.J.	St. Paul	
Wheeler, Larry	Minneapolis	O
Wood, Bill	Crystal	FP

Sailboat Codes: F-Fairwind, E-EC12, M-Marblehead, O-Other Sail
 Non-Sail. Codes: C-Commercial / Workboat, T-Tug, P-Pleasure, S-Speedboat, W-Warship / Military, Q-Other Non-Sail

Hennessey Marine Classes, a special school formed to stimulate interest in designing, building and racing large boats by first designing smaller model yachts. Several local businesses, including Marblehead Model Yachts Inc. and Nutting's Marblehead Workshop, came into existence to support the growing regattas on Redd's Pond. The Marblehead Messenger, predecessor to the Reporter, sponsored a Labor Day race and later donated "The Messenger Cup" to the club.

By 1925, model yacht racing only added to Marblehead's fame as Racing Capital of America. That year's Labor Day regatta drew 175 model yachts in seven classes from 12 inches to 48 inches. A crowd of more than 1,000 people watched from shore.

That year, a group of adult model yachtsmen (many of whom raced midget yachts as youngsters) formed the Marblehead Model Yacht Club. Duncan Dana, a well-known Yacht designer of the time, was elected the first commodore.

At first, the club continued with tradition and sponsored races in several classes.

In 1927, naval architect L. Francis Herreshoff, who had designed craft from dinghies to America's Cup J-boats, joined the club and proposed a class of model yachts with only one restriction: 450 inches of sail.

Given the experimental nature of many club members, it wasn't long until the same idea was refined to produce a boat that was large enough for optimum sailing and small enough to be carried about, preferably inside an automobile.

Clough created the M-class in 1931 with his first boat, 50 -inches long and with 800 square inches of sail. earning the M-class the more official designation of "50-800."

Almost overnight, the M-class became the standard for the Marblehead Model Yacht Club. It didn't hurt that local pride dictated Marblehead sailors would race Marblehead designs.

In only one year, the Model Yacht Racing Association of America recognized the M-class. By 1937, the International Model Yacht Racing Union followed suit.

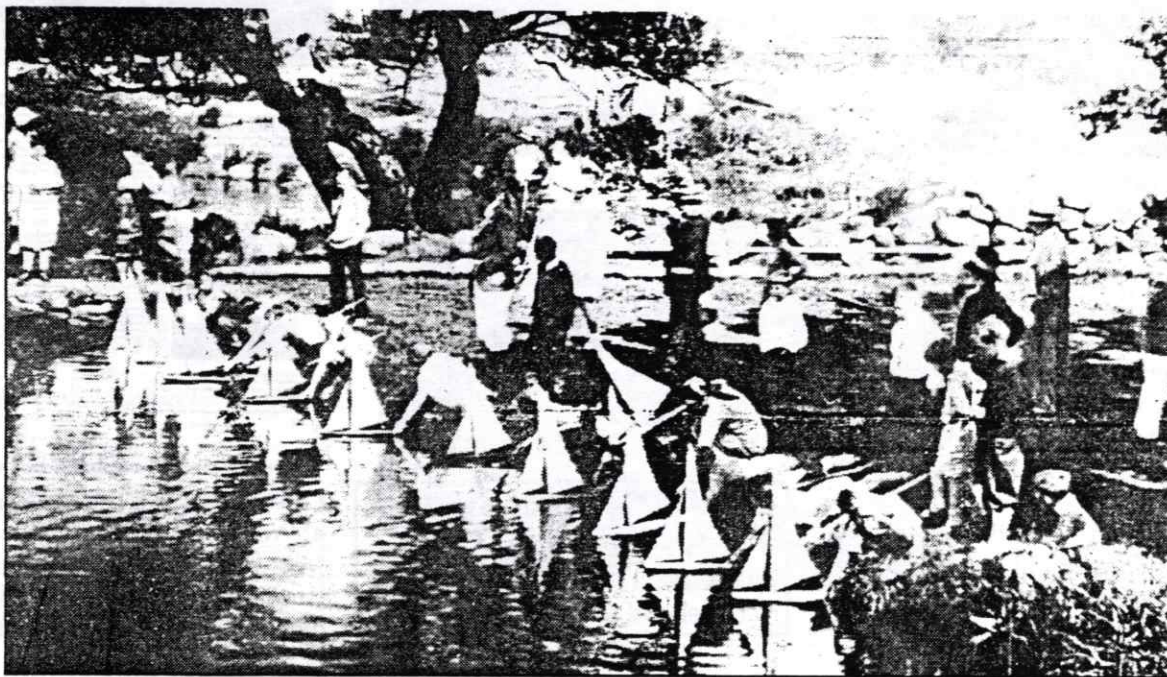
Snow says the fact that the IMYRU president of 1937 was John Black, an ardent support of the M-design boat.

Many design refinements were made during the next 40 years, notably by Black, J. Selmar Larsen, Bill Full and Standley Goodwin, among others. All featured ultra-high sails and "self-tacking" vane steering was only supplanted by the advent of radio-controlled model yachts in the 1970s.

Worth now offers a further refinement, a free-standing, pivoting swing rig.

Jim Dolan, another avid M-class sailor, says constant experimentation, is both good and allowed in the class.

"Because this is an experimental class, it means that if I have a



Starting line — Model yacht racers, still mostly young people, line up on shore to start the race in this photo, taken sometime in the early to mid-1920s.

formulas for propulsion and battery capacity charts along with hundreds of tips and photos. Although written by a foreign author and having reference to European merchandise, it's nonetheless a very valuable book to own.

The Manual for the East Coast 12-Meter by Bob Wells

This manual was compiled by Bob Wells of the Greater Seattle Yacht Club and is a collection of excellent techniques on the construction and sailing of an EC-12. The manual is well organized and has straightforward information. Being a professional technical writer and illustrator myself, I can see a lot of time and effort went into this book. Although most of the illustrations were drawn by hand, they are still clear and informative. Anyone interested in building a model sailboat of any kind will find this book informative. You don't have to be an EC-12 nut (Steve) to find this book very useful.

CLASSIFIEDS

EC-12 Manual - Anyone interested in building an EC-12, contact me at home. I Have a EC-12 Building Manual full of over 200 pages of text, instructions, drawings and diagrams. -call Steve Rusk [REDACTED]

Hoop Pine Plywood for Sale - Excellent for building. 1/5 mm thick - call Jim Smith [REDACTED]

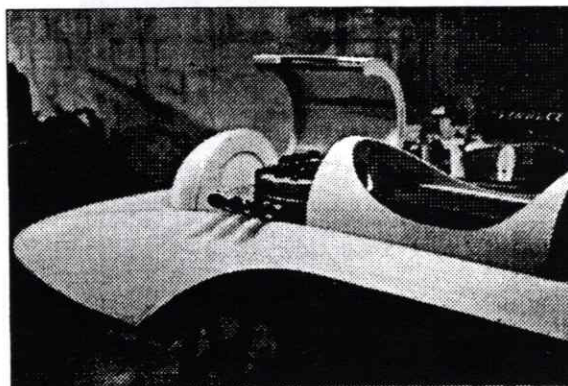
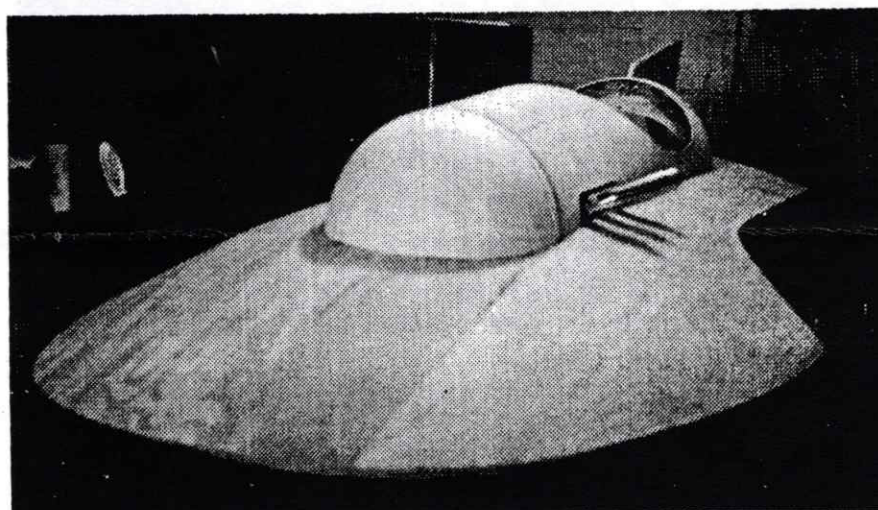
To place an ad in the classifieds, call [REDACTED] or send to:
Doug Campbell
[REDACTED]

...AND NOW FOR SOMETHING A LITTLE DIFFERENT

by Doug Campbell

My wife and I drove to Indianapolis during Thanksgiving weekend to visit relations and, more importantly, see my best friend and boat modeling buddy, Randy Timmerman. Randy usually has a boating project up his sleeve, and this time was no exception. He is an avid boat enthusiast, both model and full size, and has crafted many

interesting projects in both arenas. He has influenced my building of model boats a great deal. In his basement this time was his latest creation - an 8'-9" mini hydroplane coined the "Miss Midget Thriftway". Powered by a 15 hp single cylinder engine and having an OMC transmission with forward, reverse and neutral, Randy calculates that the little craft may do 40-45 mph. The hydro is exquisitely crafted with mahogany framing and 1/8" and 1/4" marine plywood sheeting. "Temporary Insanity" was described by Randy as the reason for building it. Although I for one can't wait to see it fly on the water when the weather is warm again.



Miss Midget Thriftway under construction

MARCH MEETING NOTICE:

TUESDAY, MARCH 15,
7:00 P.M

Centennial Lakes Maintenance
Building (See Map Below)

Anyone interested in the
Edina Model Yacht Club is
welcome to attend our next
club meeting March 15.

FOR INFORMATION
ABOUT THE EDINA
MODEL YACHT
CLUB, CALL:



RADIO CONTROLLED
WIND POWERED SAILBOATS
AND
ELECTRIC POWERED SCALE BOATS

Steve Rusk - Commodore

Tony Johnson - Rear Commodore

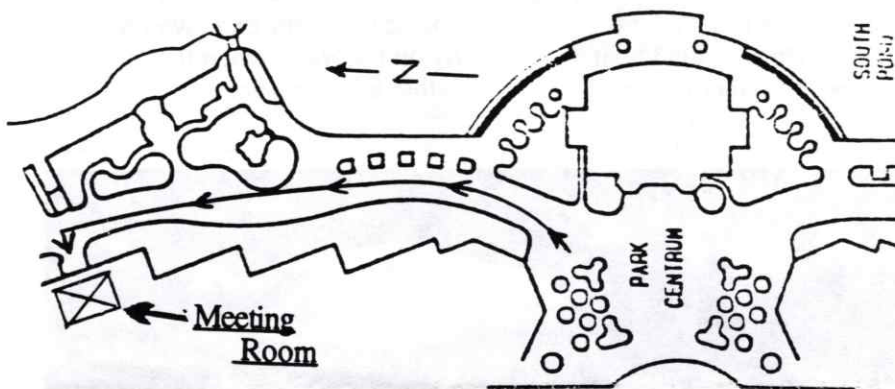
Ralph Peter - Vice Commodore/ Marketing

Jim Smith - Vice Commodore/ Scale

John Bishop - Vice Commodore

Lincoln Shea - Secretary/Treasurer

Doug Campbell - Newsletter Editor



Edina Model Yacht Club
7499 France Ave. So.
Edina, MN 55435