



SAIL & SCALE

NEWSLETTER OF THE EDINA MODEL YACHT CLUB

January 1997

Volume 6, Number 1

Commodore's Corner: Greetings all! I hope the new year finds you in good spirits. Now that the holidays are behind us it's time to focus on all of those new year's resolutions we all made.

I would imagine that some of the resolutions made by EMYC members would include to be more active in club activities (send something in for the newsletter, Ed.), to finally finish that project that's now buried on the workbench, and perhaps something like "buy a fast electric boat", well...maybe not that last one.

The Board of Directors met in December and forged out a schedule of events for the 1997 season, which is included in this edition. The schedule reflects the results from the surveys that 26 members took the time to complete. Please take the schedule and post it in a conspicuous location in your house. (mine goes on the refrigerator)

A lot of time and effort is expended to make the EMYC appealing for all the members of the club. Why not make it a point this year to participate in an event that you may not have attended in the past. Unless you fall in the pond or something like that, I can guarantee you will get a lot of enjoyment out of our excellent club. By the way, if you do happen to fall in the pond you are indirectly contributing to the enjoyment of the other members!

Dan

What's The Meeting?: Many of us have looked upon some of the beautiful models that required the hull to be planked and wondered...how did they do that? Joe Hjelmstad will be presenting to the club the dos and don'ts of hull planking. Also being covered will be fiber-glassing as it pertains to hull construction.

Where's The Meeting?: Centennial Lakes Garage, Band Room. Go 300 feet north (left) from the Centrum Building. Enter the door on the rear of the retail complex adjacent to the large overhead garage door.

Who's In...Who's Out...Who's on First?: An up to date frequency chart is in the works. All unrenewed member's names will be stricken on January 31st. Make sure that your membership is paid up by then, or you may find a bunch of "new guys" on your channel.

Builder's Corner: The promised sample of the Shoreline Trawler mentioned in the last issue has still not made an appearance at my doorstep. My apologies all those who showed an interest. I'm afraid that you'll have to look elsewhere for a winter project.

Deadline: For the February newsletter: - Feb.4th

Membership: You may recall that last year, the club membership year was changed to coincide with the calendar year. If you have not sent in your \$20 for 1997, this will be your last newsletter. All renewed members have a "97" written in the corner of this newsletter's mailing label. If that number does not appear, use the enclosed form to renew now.

Opinions Returned: Thanks to all who took the time to complete the survey form in the November newsletter. We have attempted to formulate a 1997 schedule of events that meets with your desires. *The Board*

Plan Ahead for 1997: The Meeting and Building Schedule is enclosed (twice). For those of you who keep the newsletter handy, there's a full schedule on page 3. For those who would rather tape the list to the refrigerator or the bathroom mirror, there is a loose copy inserted for your convenience. Don't miss out on this year's festivities!

A Different Challenge: Yeah! The *Name The Ship* contest last year was a "bust.". But with your cooperation, I'd like to continue down a similar path in 1997. I'll print a ship related question each month with its answer published the following month. Everyone who calls the editor (831-8184) with the correct answer will be acknowledged. I will also need questions (and correct answers) from the membership in order to keep the game going. So, here's the first:

Question of the Month: Who was the first president of the United States...to travel in a submerged submarine?

Haul Away!: Futaba has a new multispeed drum-type "heavy-duty", sail-winch servo available for larger sailboats. The S-5801 weighs 3 oz., puts out 135 in. oz. of torque, and requires a separate 7.2volt Ni-Cd for power. List price is \$225. My guess is a street or mail-order price of about one-fifty.

Motive Power: Gary Phillips reports that Sub Tech, 112 Primrose Lane, Brick, NJ 08724 [redacted] has surplus but unused Pittman 12 volt motors available for \$30. These are similar to the Dumas \$54 motor with the exception that they are fitted with ball bearings...usually a \$20 option from Pittman!

I.D.s: I have tried to keep track of membership renewals. However...If you have not received your new membership card, with an expiration date of Jan.'98, please give me a call. I'll get one out to you with the next newsletter.

Jim

Membership Meeting, 11/19/96: Quite a crowd gathered in the Centrum building for our annual Swap Meet. Six members turned in survey forms and an additional dozen paid their membership dues for '97. I don't know if anyone got an accurate count, but I'd put the turnout at 30 to 35. There was a bit of boating hardware for sale from two recently closed hobby shops. The prices were a somewhat high

so I imagine we'll see the bulk of it again in the future. Several kits, such as Doug Campbell's *Cobra*, changed hands ... again. Dave Bros "unloaded" some lead shot and I disposed of a bit of miscellaneous "stuff". Something for everyone! Although there was no busir conducted and no presentations, this meeting generated more than an average amount of enthusiasm.

Jim

All Dressed Up and: Club shirts and hats with the EMYC logo are available from: *Expressly Yours* located at 9102 Burnsville Center Mall. This is a kiosk type retail location in Burnsville Center. They have our club logo on their computer and can put it on a variety of shirts, hats, jackets, etc. The club standard for shirts is a GOLF type shirt in light grey with charcoal grey stitching. Hats are available in any combination of colors.

If there is enough interest, the club can place an order. We do not get a volume discount, so prices are the same whether ordered individually or in a group. I will have samples at the January meeting.

George Pfeifer

The Language of Sailing: With all of the recent hullabaloo over "Ebonics", maybe it's time for a review of the somewhat foreign language of sailing. A bit "tongue -in-cheek" perhaps, but also a bit useful for the novice sailor.

Port: Left.

Starboard: Right.

Windward: Where the wind's coming from.

Leeward: Where the wind's going. Now that you understand that, here's the basic rule of sailing, and one of the few used at our pond: A boat on starboard tack - the wind is coming over its right side, opposite its mainsail - has the right of way over a port-tack boat. If both are on starboard tack, the leeward boat has the right of way. (Keep reading. You're almost an expert.)

Forward - Bow: The front of the boat. The pointy end.

Aft-Stern: The back of the boat. When racing, you don't like to see this part of the other guy's boat.

Beam: The side of the boat. Also, what sailors do when they win.

Keel: The big heavy thing on the bottom of the boat that keeps it from tipping over.

Sheets: Those big white things, right? Wrong. Sheets are the lines (never say "ropes") that control the sails.

Headsail - Jib: The front sail.

Mainsail: The back sail.

Mast: Everybody knows this one. The tall vertical pole in the middle of the boat.

Boom: The horizontal pole that swings over the back of the boat.

Headstay, backstay, shrouds: The cables (front, back and side) that hold the mast up.

Spreaders: The struts sticking out from the mast.

Jibe: When sailing downwind, to turn the boat so that the boom crosses over.

Tack: Pay attention here. This can be: (a) the front, lower corner of a sail, (b) the direction the boat is sailing, as in port or starboard tack, (c) the act of turning the boat across the wind so that the sails change sides or (d) the rations of an under fed crew (as in "hard").

Clew: No need to call Sherlock Holmes. It's the lower rear corner of a sail.

Head: (a) the top of a sail or (b) the bucket you aim for when the lake is just a bit toooo choppy.

Halyards: The lines up the mast that hoist the sails. On square rigged ships, the command "Haul yards" resulted in raising the yardarms which carried the sails aloft.

Luff: (a) The front part of a sail, (b) to sail so close to the wind that the sails flutter or (c) a tactical maneuver to force a windward opponent to tack.

Mark: A buoy or other floating object marking the course to be sailed.

Cover: position your boat so as to disturb your opponent's wind or, when you have a big lead, just to stay between your opponent and the next mark.

Knot: One nautical mile (6080feet) per hour (a speed in knots is 15% faster than miles per hour).

Beat: To sail upwind. Also how you feel after a tough race.

Point: To sail as close to the wind as possible.

Pinch: To sail so close to the wind that the boat slows down. Very tricky.

Run: (a) To sail downwind or (b) the best way to get a seat at the pub when the regatta's over.

Author Unknown

February Meeting (Saturday, Feb. 22nd) ... March Meeting (Saturday, Mar. 22nd) ... Note those days!!

You will definitely want to attend the February meeting. The EMYC will be hosting Mr. Dean DeRussia of Model Marine Corporation of Menominee, Michigan. You may have noticed ads in the boating magazines for "Harken" type sailboat fittings. Model Marine is the manufacturer of this fantastic work. Along with his fittings, Dean will display various hulls, sailboats and other goodies that I'm sure you will find interesting. As Dean is taking the time to travel all the way from Michigan to Edina, your attendance would be greatly appreciated at this meeting. You will notice that this meeting is on Saturday, the 22nd. This is a departure from our normal 3rd Tuesday of the month format to accomodate this special guest.

Dan Proulx

The March meeting will be a builder's delight. This too, is a Saturday (22nd) meeting, so mark your calendar. By then, you'll be knee deep in finishing your latest water displacement project and probably having construction, wiring, sealing, painting, radio, lighting and on and on questions. The club is going to try a builder's solution meeting. We will set-up in our shop area of the Centennial Lakes garage. This will give you a chance to work on and get help from others with your building problems. Bring your project and questions to those who have been there, done that. We'll break for lunch at one of the locals, then finish off in the afternoon.

Dave Bros

EMYC Meeting and Building Schedule for 1997

Dan Proulx

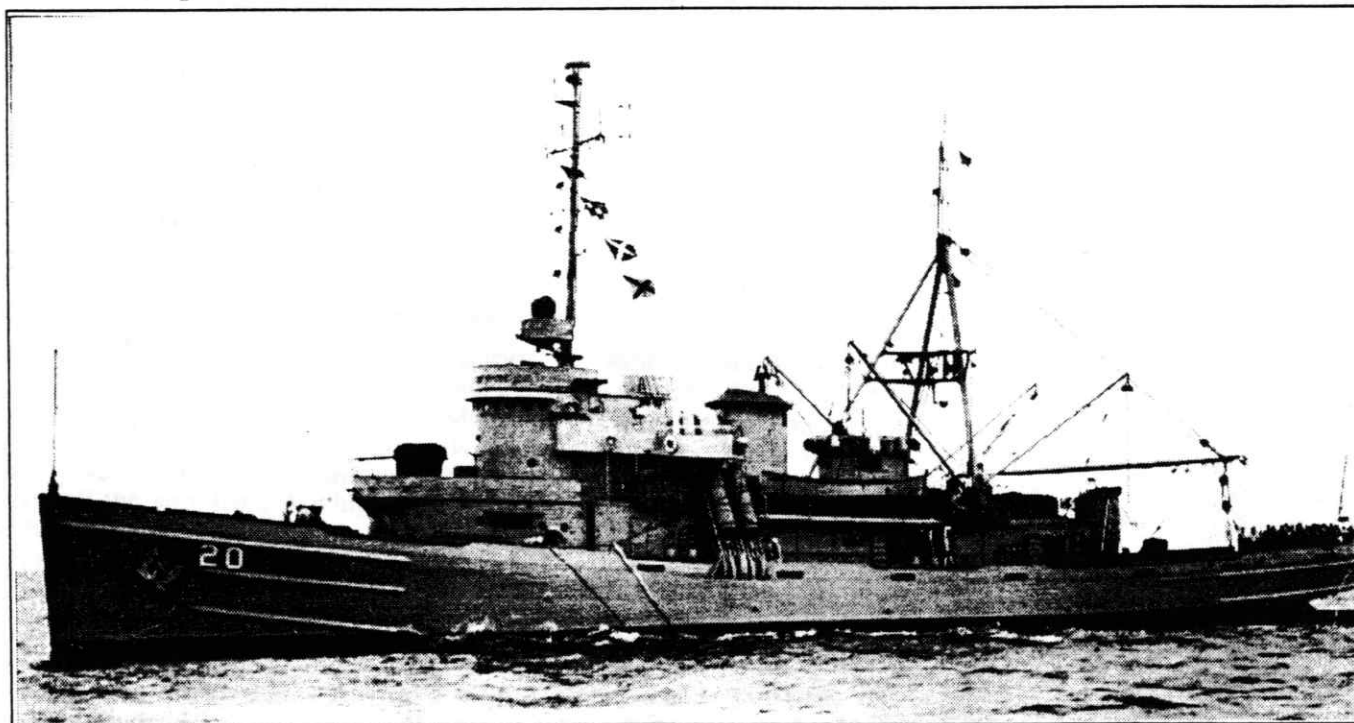
Date/Time	Place	Topic	Boating Event
Tuesday, Jan 21 - 7:00 PM	Band Room	Planking/Hull Const.	
Saturday, Feb 22 12:00 PM	Band Room N Pond	Harken Products Dsply & exhibition	Ice Boat demonstrations
Saturday, Mar 22 -10:00 AM	Band Room	Building Projects	
Tuesday April 15, 7:00 PM	Centrum	Painting	
Tuesday May 20, 7:00 PM	Centrum	Sailing Tips	Sunday May 25 th 1:00 PM Sailing Tune-up
Tuesday June 17, 7:00 PM	Centrum	Meeting/Show & Tell	Sunday June 8 th Parade of Boats
Tuesday July 15, 7:00 PM	Centrum	Meeting/Show & Tell	Sunday July 20 th 1:00 PM Big E - South Pond
			Saturday July 26 th 10:00Am to 7:00 PM "Minnesota Splash"
Tuesday Aug 19, 7:00 PM	Centrum	Meeting/Show & Tell	Sunday Aug 24 th 1:00 PM All Class Sail Regatta
Tuesday Sept 16, 7:00 PM	Centrum	Meeting/Kit Review	Sunday Sept. 21 st 1:00 PM Fast Electric Regatta
Tuesday Oct 21, 7:00 PM	Band Room	Meeting/To be anncd.	Sunday Oct. 12 th 1:00 PM Columbus Day Regatta
Tuesday Nov 18, 7:00 PM	Centrum	Swap Meet	Saturday Nov 8 th Dry Dock Party

Additional events such as Handicap Sailing, Sailboat Class Racing and Lighthouse Night will be listed as we know more about them.

Edina Model Yacht Club**Income and Expenses 1996**

Submitted By: G. Phillips, Nov.27,1996

	Balance from: 11/21/95	\$1,181.77
Income, 1996		
Dues, etc.	\$1,511.10	
Advertising	<u>\$ 85.00</u>	
	Total	\$1,596.10
Income:	11/21/95 - 11/27/96	<u>\$1,596.10</u>
TOTAL:		<u>\$2,777.87</u>
Expenses, 1996		
Newsletter	\$338.11	
Parade of Model Boats	\$170.55	
Picnic	\$251.19	
Dry Dock Party	\$405.82	
Printing and Materials	\$137.80	
MISC. (Refreshments, buoys, magazine sub., bank chgs)	<u>\$330.95</u>	
	Total	\$1,634.42
Total Expenses:	11/21/95 - 11/27/96	<u>\$1,634.42</u>
	Balance as of: 11/27/96	\$1,143.45

**ASR 20 (Submarine Rescue Vessel) USS Skylark 1951**

Originally laid down as ATF 165 (Ocean Tug, Fleet), USS Yustaga, July 1945

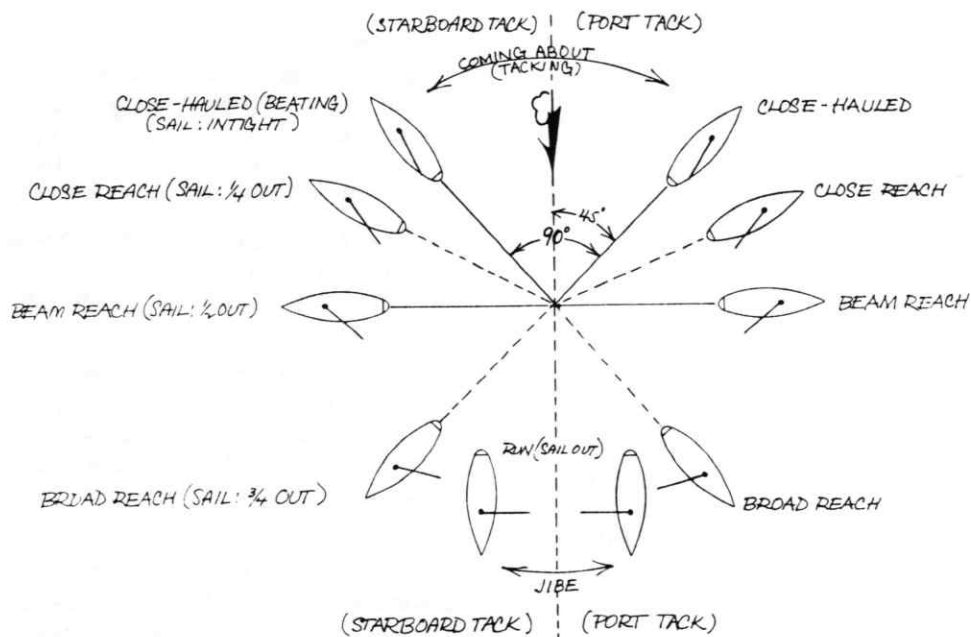
Thanks to the *Towline*, newsletter of the National Association Of Fleet Tug Sailors

EMYC Meeting and Building Schedule for 1997

Dan Proulx

Date/Time	Place	Topic	Boating Event
Tuesday, Jan 21 - 7:00 PM	Band Room	Planking/Hull Const.	
Saturday, Feb 22 12:00 PM	Band Room N Pond	Harken Products Dsply & exhibition	Ice Boat demonstrations
Saturday, Mar 22 -10:00 AM	Band Room	Building Projects	
Tuesday April 15, 7:00 PM	Centrum	Painting	
Tuesday May 20, 7:00 PM	Centrum	Sailing Tips	Sunday May 25 th 1:00 PM Sailing Tune-up
Tuesday June 17, 7:00 PM	Centrum	Meeting/Show & Tell	Sunday June 8 th Parade of Boats
Tuesday July 15, 7:00 PM	Centrum	Meeting/Show & Tell	Sunday July 20 th 1:00 PM Big E - South Pond
			Saturday July 26 th 10:00Am to 7:00 PM "Minnesota Splash"
Tuesday Aug 19, 7:00 PM	Centrum	Meeting/Show & Tell	Sunday Aug 24 th 1:00 PM All Class Sail Regatta
Tuesday Sept 16, 7:00 PM	Centrum	Meeting/Kit Review	Sunday Sept. 21 st 1:00 PM Fast Electric Regatta
Tuesday Oct 21, 7:00 PM	Band Room	Meeting/To be anncd.	Sunday Oct. 12 th 1:00 PM Columbus Day Regatta
Tuesday Nov 18, 7:00 PM	Centrum	Swap Meet	Saturday Nov 8 th Dry Dock Party

Additional events such as Handicap Sailing, Sailboat Class Racing and Lighthouse Night will be listed as we know more about them.



Points Of Sailing: The relationship of the wind to the sails

January Meeting Notice:

(Third Tuesday of the Month)

Tuesday, Jan. 21st

7:00 P.M.

Centennial Lakes
Maintenance Garage
Band Room

Commodore:	Dan Proulx
Vice Commodore	Dave Bros
Vice Commodore	Doug Campbell
Vice Commodore	George Pfeifer
Vice Commodore	Joe Hjelmstad
Treasurer	Gary Phillips
Newsletter Editor	Jim Smith

HobbyTown USA

Build Your Dreams!



**Radio Controlled
Boats - Cars - Planes
Sports Cards
Trains - Rockets -
Kites
Tools - Paints
Models
& Much More**

OPEN

M - F 10 TO 9

SAT 10 TO 6

SUN 11 TO 5

7Hi Center, Hwy. 7 & 101

4818 S. Hwy 101

Minnetonka, MN. 55345

470-7474

EDINA MODEL YACHT CLUB
CENTENNIAL LAKES CENTRUM
7499 FRANCE AVENUE SOUTH
EDINA, MN 55435

First Class